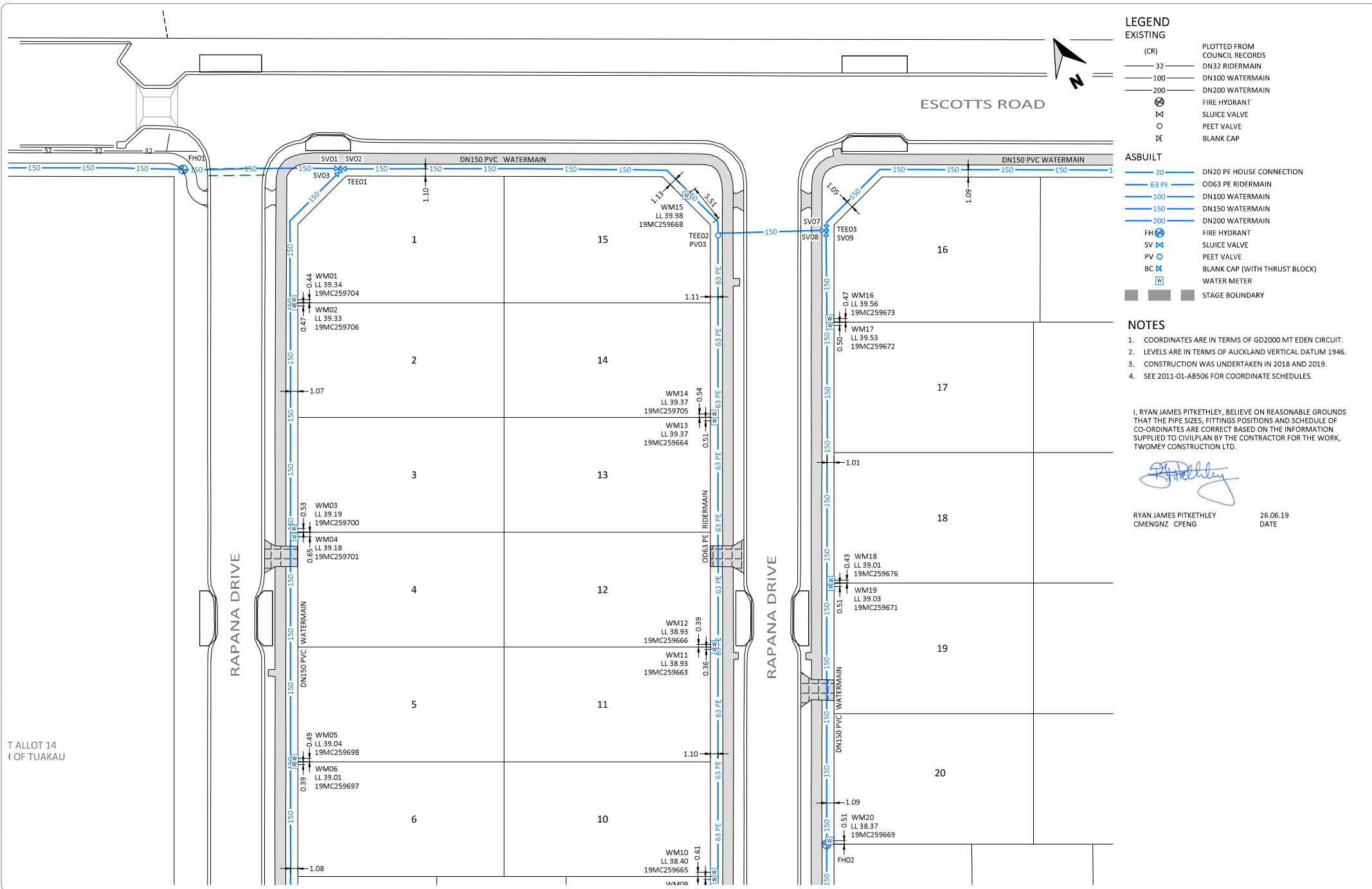


Printed by: DAREN@27.06.19 // Filepath: S:\JOBS\2011 - HUGHES DEVELOPMENTS TUAKAU\CAD\ASBUILT\3\2011-01-AB500.DWG



LEGEND

EXISTING

- (CR) PLOTTED FROM COUNCIL RECORDS
- 32 — DN32 RIDERMAIN
- 100 — DN100 WATERMAIN
- 200 — DN200 WATERMAIN
- ⊗ FIRE HYDRANT
- ⊗ SLUICE VALVE
- PEET VALVE
- ⊗ BLANK CAP

ASBUILT

- 20 — DN20 PE HOUSE CONNECTION
- 63 PE — OD63 PE RIDERMAIN
- 100 — DN100 WATERMAIN
- 150 — DN150 WATERMAIN
- 200 — DN200 WATERMAIN
- FH ⊗ FIRE HYDRANT
- SV ⊗ SLUICE VALVE
- PV ⊗ PEET VALVE
- BC ⊗ BLANK CAP (WITH THRUST BLOCK)
- ⊗ WATER METER
- STAGE BOUNDARY

- ### NOTES
- COORDINATES ARE IN TERMS OF GD2000 MT EDEN CIRCUIT.
 - LEVELS ARE IN TERMS OF AUCKLAND VERTICAL DATUM 1946.
 - CONSTRUCTION WAS UNDERTAKEN IN 2018 AND 2019.
 - SEE 2011-01-AB506 FOR COORDINATE SCHEDULES.

I, RYAN JAMES PITKETHLEY, BELIEVE ON REASONABLE GROUNDS THAT THE PIPE SIZES, FITTINGS POSITIONS AND SCHEDULE OF CO-ORDINATES ARE CORRECT BASED ON THE INFORMATION SUPPLIED TO CIVILPLAN BY THE CONTRACTOR FOR THE WORK, TWOMEY CONSTRUCTION LTD.

RYAN JAMES PITKETHLEY 26.06.19
CMENGNZ CPENG DATE

T ALLOT 14
OF TUAKAU

A	ASBUILT ISSUED	RP	26.06.19
REV	REVISION DETAILS	BY	DATE

DRAWN:	DATE:
DKP	05.2019
CHECKED:	DATE:
MRR	26.06.19
APPROVED:	DATE:
RP	26.06.19

THIS DRAWING (AND DESIGN) REMAINS THE PROPERTY OF CIVILPLAN CONSULTANTS LIMITED AND MAY NOT BE REPRODUCED OR ALTERED WITHOUT PRIOR AGREEMENT FROM CIVILPLAN CONSULTANTS LIMITED. CIVILPLAN CONSULTANTS LIMITED WILL NOT ACCEPT LIABILITY ARISING FROM UNAUTHORISED USE OF THIS DRAWING.

Level 3, 3 Osterley Way, Manukau, Auckland. Phone: 09 222 2445

PROJECT TITLE:
**HUGHES DEVELOPMENTS LIMITED
99 ESCOTTS ROAD
TUAKAU**

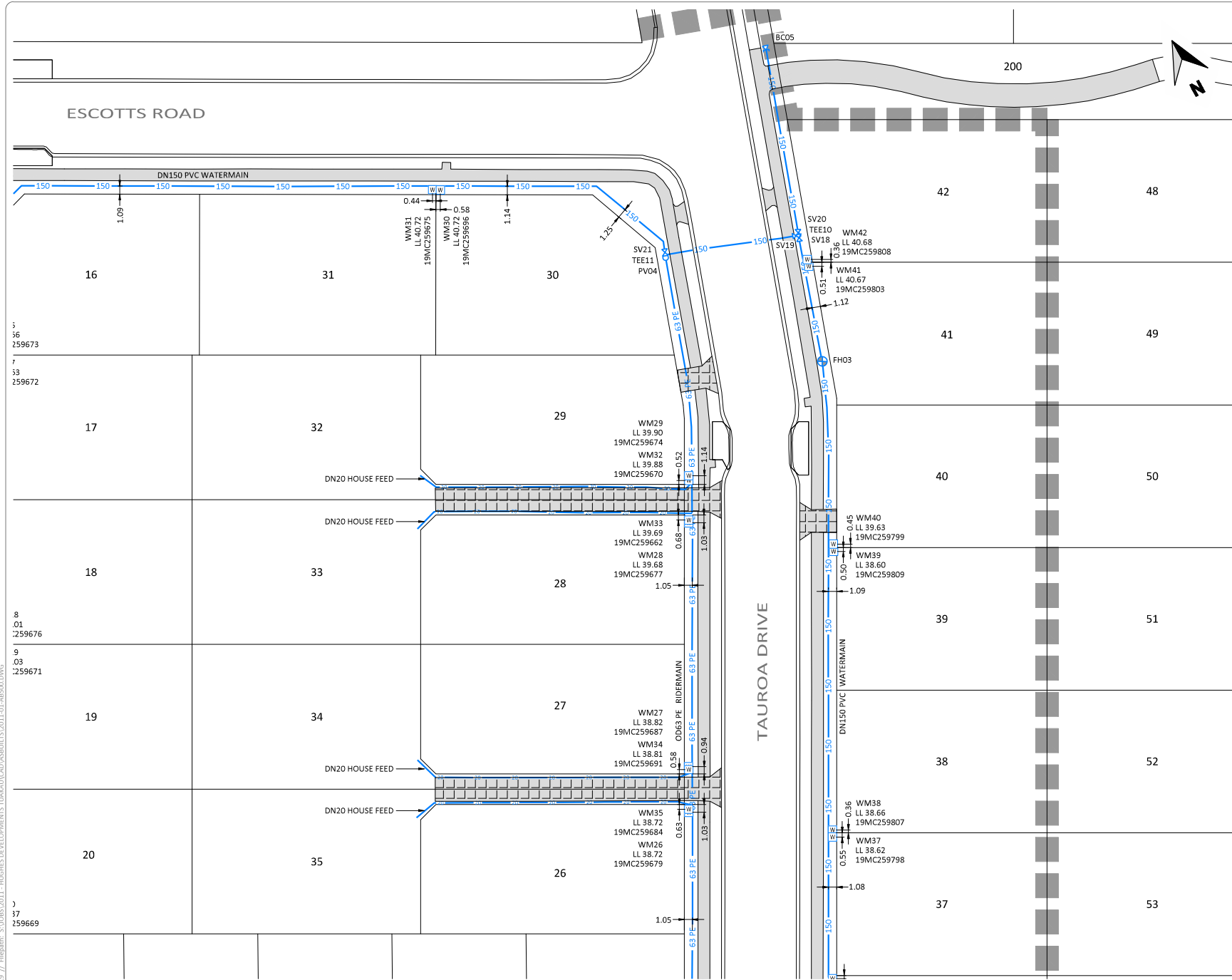
SHEET TITLE:
**WATER SUPPLY ASBUILT PLAN
STAGE 1 - DETAIL SHEET 1
SUB0311/18 & LUC0489/18**

ISSUE STATUS: **ASBUILT**

SCALE: (A1/A3) **1:250 / 1:500**

SCALE BAR: 0 5 10 15 20 25m

DRAWING NUMBER: **2011-01-AB502** REV: **A**



LEGEND

EXISTING

- (CR) PLOTTED FROM COUNCIL RECORDS
- 32 — DN32 RIDERMAIN
- 100 — DN100 WATERMAIN
- 200 — DN200 WATERMAIN
- ⊗ FIRE HYDRANT
- ⊗ SLUICE VALVE
- PEET VALVE
- ⊗ BLANK CAP

ASBUILT

- 20 — DN20 PE HOUSE CONNECTION
- 63 PE — OD63 PE RIDERMAIN
- 100 — DN100 WATERMAIN
- 150 — DN150 WATERMAIN
- 200 — DN200 WATERMAIN
- FH ⊗ FIRE HYDRANT
- SV ⊗ SLUICE VALVE
- PV ○ PEET VALVE
- BC ⊗ BLANK CAP (WITH THRUST BLOCK)
- ⊗ WATER METER
- STAGE BOUNDARY

- ### NOTES
- COORDINATES ARE IN TERMS OF GD2000 MT EDEN CIRCUIT.
 - LEVELS ARE IN TERMS OF AUCKLAND VERTICAL DATUM 1946.
 - CONSTRUCTION WAS UNDERTAKEN IN 2018 AND 2019.
 - SEE 2011-01-AB506 FOR COORDINATE SCHEDULES.

I, RYAN JAMES PITKETHLEY, BELIEVE ON REASONABLE GROUNDS THAT THE PIPE SIZES, FITTINGS POSITIONS AND SCHEDULE OF CO-ORDINATES ARE CORRECT BASED ON THE INFORMATION SUPPLIED TO CIVILPLAN BY THE CONTRACTOR FOR THE WORK, TWOMEY CONSTRUCTION LTD.

Ryan James Pitkethley
 RYAN JAMES PITKETHLEY
 CMENGNZ CPENG 26.06.19
 DATE

Printed by: DAREN@27.06.19 // Filepath: S:\JOBS\2011 - HUGHES DEVELOPMENTS TUAKAU\CAD\ASBUILT\3\2011-01-AB500.DWG

A	ASBUILT ISSUED	RP	26.06.19
REV	REVISION DETAILS	BY	DATE

DRAWN:	DATE:
DKP	05.2019
CHECKED:	DATE:
MRR	26.06.19
APPROVED:	DATE:
RP	26.06.19

THIS DRAWING (AND DESIGN) REMAINS THE PROPERTY OF CIVILPLAN CONSULTANTS LIMITED AND MAY NOT BE REPRODUCED OR ALTERED WITHOUT PRIOR AGREEMENT FROM CIVILPLAN CONSULTANTS LIMITED. CIVILPLAN CONSULTANTS LIMITED WILL NOT ACCEPT LIABILITY ARISING FROM UNAUTHORISED USE OF THIS DRAWING.

CIVILPLAN CONSULTANTS
 Level 3, 3 Osterley Way, Manukau, Auckland. Phone: 09 222 2445

PROJECT TITLE:
HUGHES DEVELOPMENTS LIMITED
 99 ESCOTTS ROAD
 TUAKAU

SHEET TITLE:
WATER SUPPLY ASBUILT PLAN
 STAGE 1 - DETAIL SHEET 2
 SUB0311/18 & LUC0489/18

ISSUE STATUS: **ASBUILT**

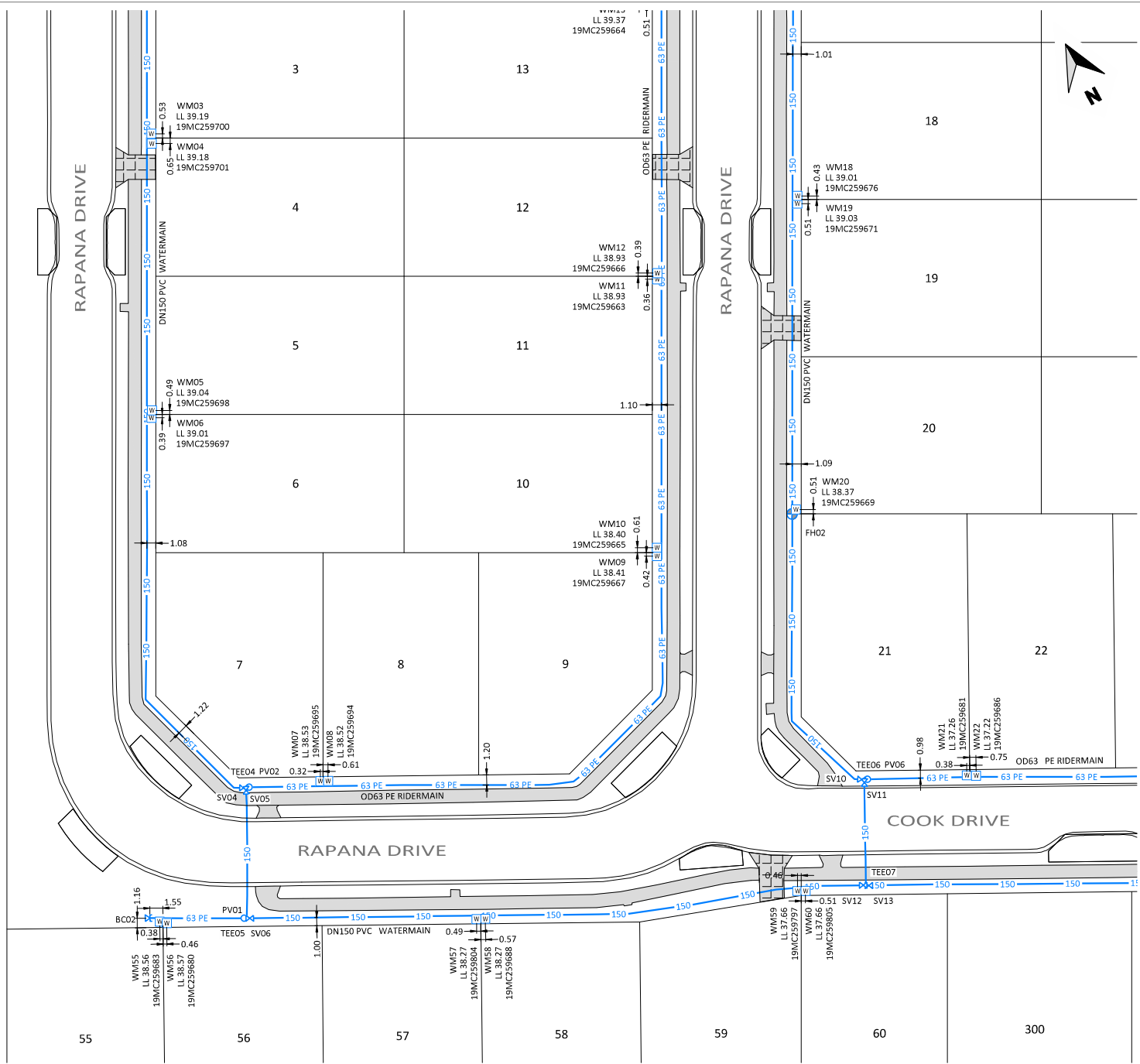
SCALE: (A1/A3) **1:250 / 1:500**

SCALE BAR: 0 5 10 15 20 25m

DRAWING NUMBER: **2011-01-AB503** REV: **A**

Printed by: DAREN@27.06.19 // Filepath: S:\JOBS\2011 - HUGHES DEVELOPMENTS TUAKAU\CAD\ASBUILT\3\2011-01-AB500.DWG

T ALLOT 14
1 OF TUAKAU



LEGEND

EXISTING

- (CR) PLOTTED FROM COUNCIL RECORDS
- 32 — DN32 RIDERMAIN
- 100 — DN100 WATERMAIN
- 150 — DN150 WATERMAIN
- 200 — DN200 WATERMAIN
- ⊗ FIRE HYDRANT
- ⊗ SLUICE VALVE
- PEET VALVE
- ⊗ BLANK CAP

ASBUILT

- 20 — DN20 PE HOUSE CONNECTION
- 63 PE — OD63 PE RIDERMAIN
- 100 — DN100 WATERMAIN
- 150 — DN150 WATERMAIN
- 200 — DN200 WATERMAIN
- FH ⊗ FIRE HYDRANT
- SV ⊗ SLUICE VALVE
- PV ○ PEET VALVE
- BC ⊗ BLANK CAP (WITH THRUST BLOCK)
- W ⊗ WATER METER

■ ■ ■ STAGE BOUNDARY

- ### NOTES
- COORDINATES ARE IN TERMS OF GD2000 MT EDEN CIRCUIT.
 - LEVELS ARE IN TERMS OF AUCKLAND VERTICAL DATUM 1946.
 - CONSTRUCTION WAS UNDERTAKEN IN 2018 AND 2019.
 - SEE 2011-01-AB506 FOR COORDINATE SCHEDULES.

I, RYAN JAMES PITKETHLEY, BELIEVE ON REASONABLE GROUNDS THAT THE PIPE SIZES, FITTINGS POSITIONS AND SCHEDULE OF CO-ORDINATES ARE CORRECT BASED ON THE INFORMATION SUPPLIED TO CIVILPLAN BY THE CONTRACTOR FOR THE WORK, TWOMEY CONSTRUCTION LTD.

RYAN JAMES PITKETHLEY
CMENGNZ CPENG
26.06.19
DATE

A	ASBUILT ISSUED	RP	26.06.19
REV	REVISION DETAILS	BY	DATE

DRAWN:	DATE:	DKP	05.2019
CHECKED:	DATE:	MRR	26.06.19
APPROVED:	DATE:	RP	26.06.19

THIS DRAWING (AND DESIGN) REMAINS THE PROPERTY OF CIVILPLAN CONSULTANTS LIMITED AND MAY NOT BE REPRODUCED OR ALTERED WITHOUT PRIOR AGREEMENT FROM CIVILPLAN CONSULTANTS LIMITED. CIVILPLAN CONSULTANTS LIMITED WILL NOT ACCEPT LIABILITY ARISING FROM UNAUTHORISED USE OF THIS DRAWING.

CIVILPLAN CONSULTANTS

Level 3, 3 Osterley Way, Manukau, Auckland. Phone: 09 222 2445

PROJECT TITLE:
**HUGHES DEVELOPMENTS LIMITED
99 ESCOTT'S ROAD
TUAKAU**

SHEET TITLE:
**WATER SUPPLY ASBUILT PLAN
STAGE 1 - DETAIL SHEET 3
SUB0311/18 & LUC0489/18**

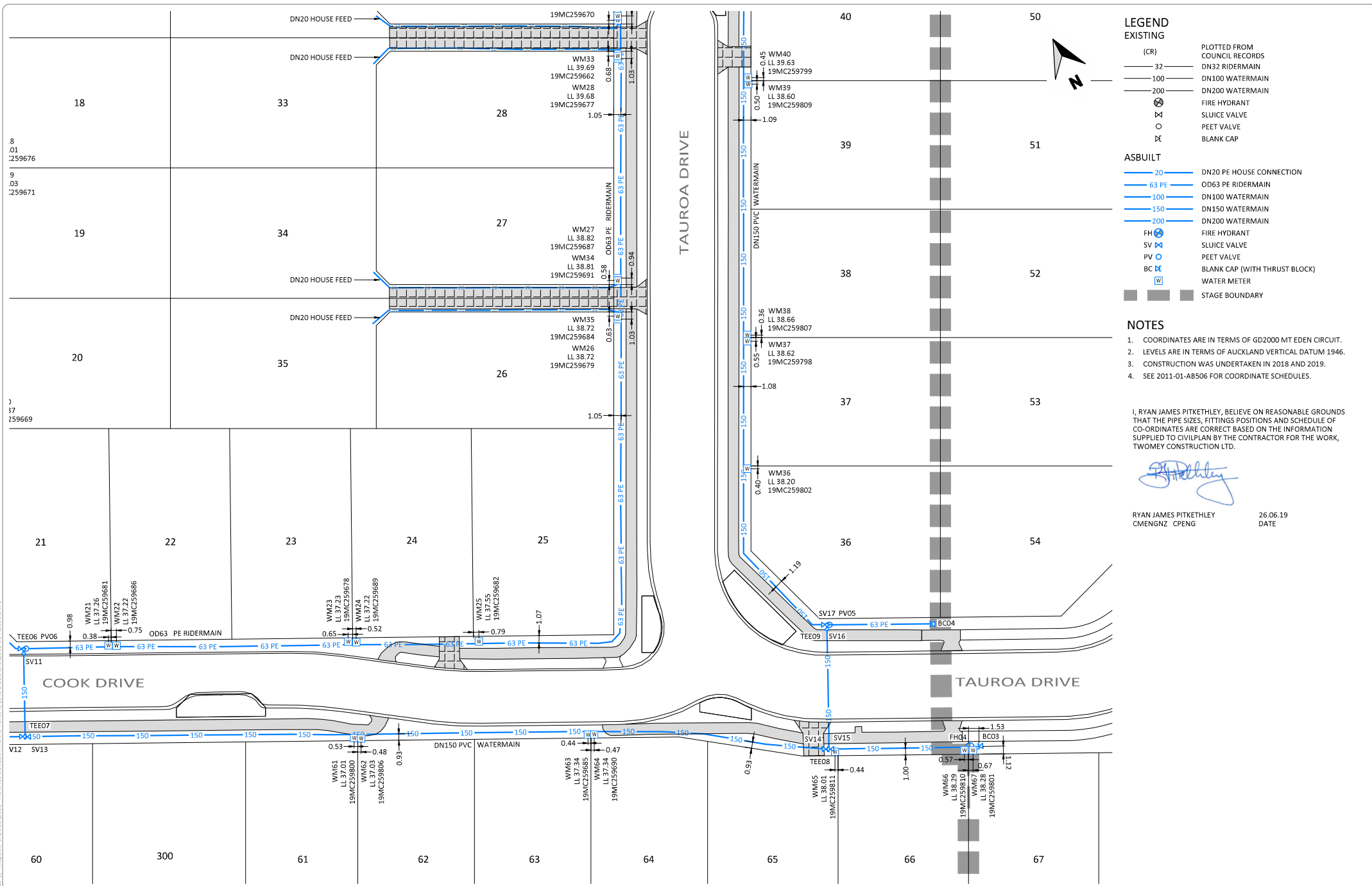
ISSUE STATUS: **ASBUILT**

SCALE: (A1/A3) **1:250 / 1:500**

SCALE BAR: 0 5 10 15 20 25m

DRAWING NUMBER: **2011-01-AB504** REV: **A**

Printed by: DAREN@27.06.19 // Filepath: S:\JOBS\2011 - HUGHES DEVELOPMENTS TUAKAU\CAD\ASBUILT\3\2011-01-AB506.DWG



- ### LEGEND
- EXISTING**
- (CR) PLOTTED FROM COUNCIL RECORDS
 - 32 — DN32 RIDERMAIN
 - 100 — DN100 WATERMAIN
 - 200 — DN200 WATERMAIN
 - ⊗ FIRE HYDRANT
 - ⊗ SLUICE VALVE
 - PEET VALVE
 - ⊗ BLANK CAP

- ASBUILT**
- 20 — DN20 PE HOUSE CONNECTION
 - 63 PE — OD63 PE RIDERMAIN
 - 100 — DN100 WATERMAIN
 - 150 — DN150 WATERMAIN
 - 200 — DN200 WATERMAIN
 - FH ⊗ FIRE HYDRANT
 - SV ⊗ SLUICE VALVE
 - PV ⊗ PEET VALVE
 - BC ⊗ BLANK CAP (WITH THRUST BLOCK)
 - W ⊗ WATER METER
 - STAGE BOUNDARY

- ### NOTES
- COORDINATES ARE IN TERMS OF GD2000 MT EDEN CIRCUIT.
 - LEVELS ARE IN TERMS OF AUCKLAND VERTICAL DATUM 1946.
 - CONSTRUCTION WAS UNDERTAKEN IN 2018 AND 2019.
 - SEE 2011-01-AB506 FOR COORDINATE SCHEDULES.

I, RYAN JAMES PITKETHLEY, BELIEVE ON REASONABLE GROUNDS THAT THE PIPE SIZES, FITTINGS POSITIONS AND SCHEDULE OF CO-ORDINATES ARE CORRECT BASED ON THE INFORMATION SUPPLIED TO CIVILPLAN BY THE CONTRACTOR FOR THE WORK, TWOMEY CONSTRUCTION LTD.

RYAN JAMES PITKETHLEY
CMENGNZ CPENG
26.06.19
DATE

A	ASBUILT ISSUED	26.06.19
REV	REVISION DETAILS	DATE

DRAWN: DATE: 05.2019
DKP
CHECKED: DATE: 26.06.19
MRR
APPROVED: DATE: 26.06.19
RIP

THIS DRAWING (AND DESIGN) REMAINS THE PROPERTY OF CIVILPLAN CONSULTANTS LIMITED AND MAY NOT BE REPRODUCED OR ALTERED WITHOUT PRIOR AGREEMENT FROM CIVILPLAN CONSULTANTS LIMITED. CIVILPLAN CONSULTANTS LIMITED WILL NOT ACCEPT LIABILITY ARISING FROM UNAUTHORISED USE OF THIS DRAWING.

CIVILPLAN
CONSULTANTS

Level 3, 3 Osterley Way, Manukau, Auckland. Phone: 09 222 2445

PROJECT TITLE:
HUGHES DEVELOPMENTS LIMITED
99 ESCOTT'S ROAD
TUAKAU

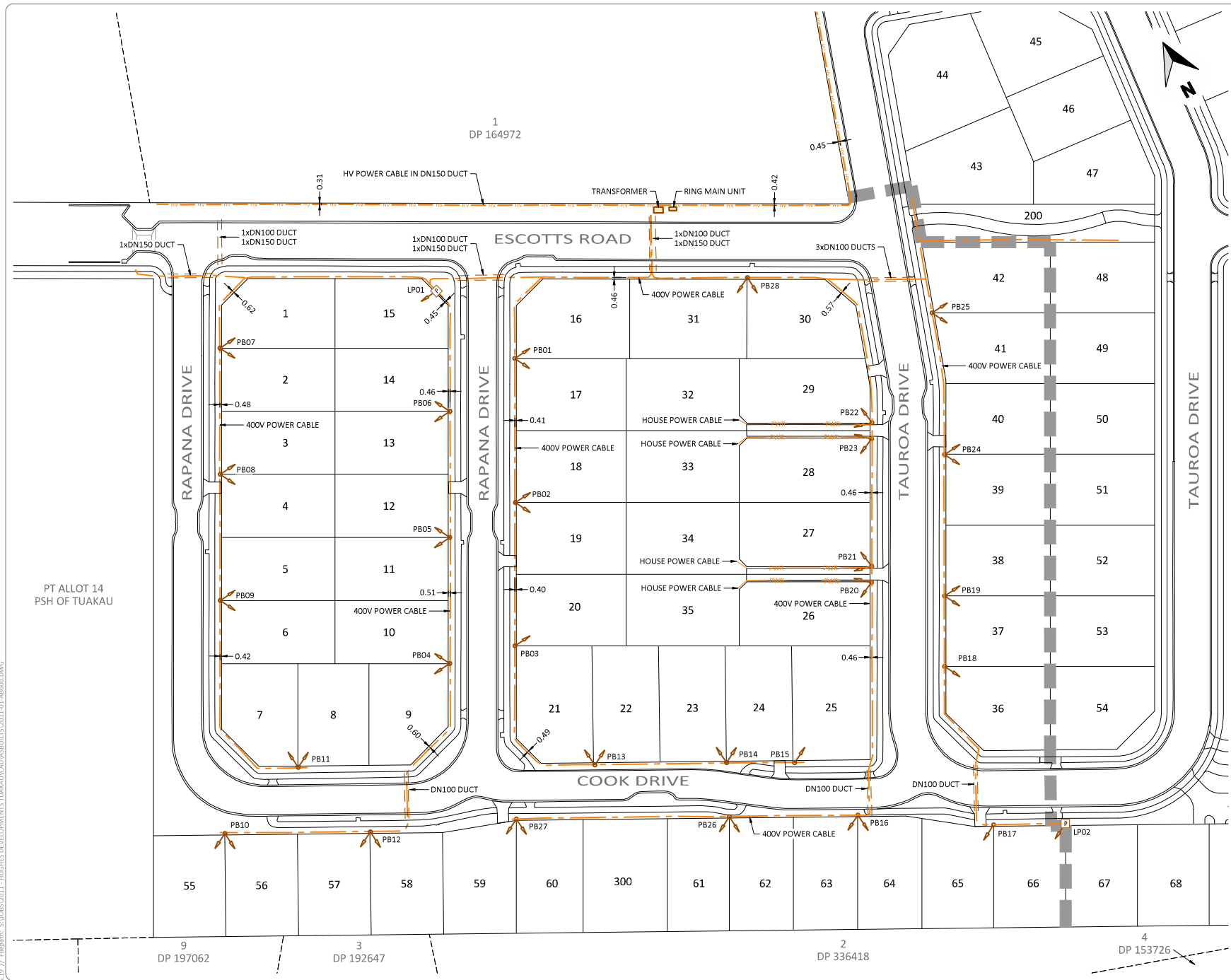
SHEET TITLE:
WATER SUPPLY ASBUILT PLAN
STAGE 1 - DETAIL SHEET 4
SUB0311/18 & LUC0489/18

ISSUE STATUS: **ASBUILT**

SCALE: (A1/A3) 1:250 / 1:500

SCALE BAR 0 5 10 15 20 25m

DRAWING NUMBER: 2011-01-AB505 REV: A



LEGEND

ASBUILT

- PILLAR BOX
- HV POWER CABLE
- LV POWER CABLE
- HOUSE POWER CABLE
- DN100 PVC DUCT
- STREETLIGHT
- LINK BOX
- RING MAIN UNIT
- TRANSFORMER
- STAGE BOUNDARY

- NOTES**
- COORDINATES ARE IN TERMS OF GD2000 MT EDEN CIRCUIT.
 - CONSTRUCTION WAS UNDERTAKEN IN 2018 AND 2019.

I, RYAN JAMES PITKETHLEY, BELIEVE ON REASONABLE GROUNDS THAT THE PIPE SIZES, FITTINGS POSITIONS AND SCHEDULE OF CO-ORDINATES ARE CORRECT BASED ON THE INFORMATION SUPPLIED TO CIVILPLAN BY THE CONTRACTOR FOR THE WORK, TWOMEY CONSTRUCTION LTD.

RYAN JAMES PITKETHLEY
CMENGNZ CPENG 26.06.19
DATE

**SCHEDULE OF COORDINATES
LINK PILLAR & PILLAR
BOXES-GD2000**

POINT No.	mE	mN
LPO1	416299.38	757219.59
LPO2	416379.74	757016.92
PB01	416309.23	757194.10
PB02	416291.42	757160.39
PB03	416273.43	757126.99
PB04	416256.05	757131.03
PB05	416271.79	757160.43
PB06	416287.51	757189.84
PB07	416241.75	757233.25
PB08	416226.03	757203.77
PB09	416210.37	757174.33
PB10	416182.39	757119.36
PB11	416207.76	757125.65
PB12	416216.52	757101.60
PB13	416277.27	757089.27
PB14	416308.29	757073.38
PB15	416324.19	757064.90
PB16	416332.43	757044.76
PB17	416362.87	757025.56
PB18	416371.18	757068.62
PB19	416379.96	757085.10
PB20	416364.56	757097.35
PB21	416366.68	757101.17
PB22	416384.58	757134.63
PB23	416382.48	757130.84
PB24	416397.59	757118.11
PB25	416412.34	757152.70
PB26	416302.20	757060.39
PB27	416252.21	757086.39
PB28	416373.59	757183.99

Printed by: DAREN@27.06.19 // Filepath: S:\JOBS\2011 - HUGHES DEVELOPMENTS TUAKAU\CAD\ASBUILT\3\2011-01-AB600.DWG

DKP	05.2019
MRR	26.06.19
APP	
RIP	26.06.19

THIS DRAWING (AND DESIGN) REMAINS THE PROPERTY OF CIVILPLAN CONSULTANTS LIMITED AND MAY NOT BE REPRODUCED OR ALTERED WITHOUT THEIR AGREEMENT FROM CIVILPLAN CONSULTANTS LIMITED. CIVILPLAN CONSULTANTS LIMITED WILL NOT ACCEPT LIABILITY ARISING FROM UNAUTHORISED USE OF THIS DRAWING.

CIVILPLAN CONSULTANTS
Level 3, 3 Osterley Way, Manukau, Auckland. Phone: 09 222 2445

PROJECT TITLE:
**HUGHES DEVELOPMENTS LIMITED
99 ESCOTTS ROAD
TUAKAU**

SHEET TITLE:
**POWER SUPPLY ASBUILT PLAN
STAGE 1 - SHEET 1
SUB0311/18 & LUC0489/18**

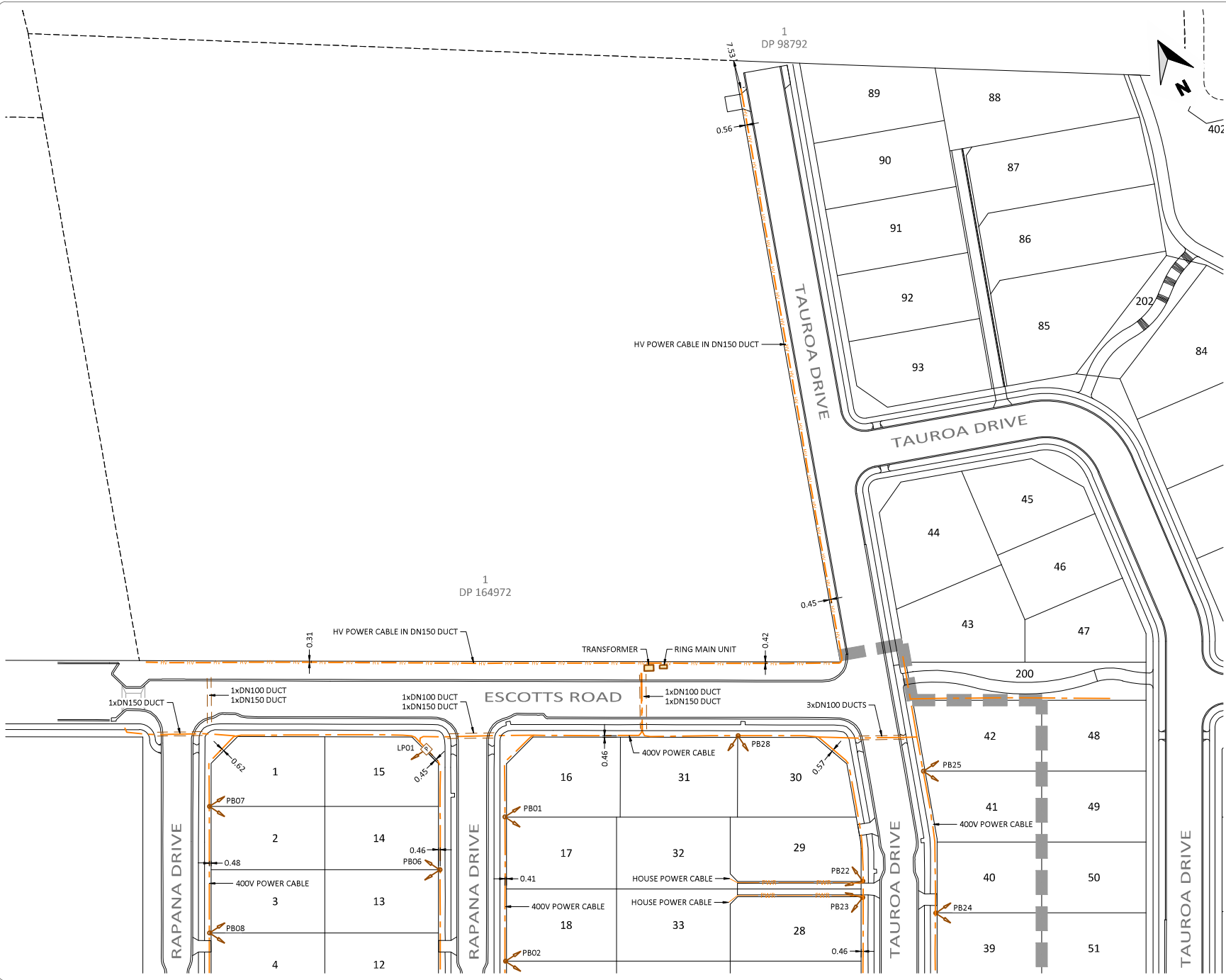
ISSUE STATUS: **ASBUILT**

SCALE: (A1/A3) **1:500 / 1:1000**

SCALE BAR: 0 10 20 30 40 50m

DRAWING NUMBER: **2011-01-AB600** REV: **A**

Printed by: DAREN@27.06.19 // Filepath: S:\JOBS\2011 - HUGHES DEVELOPMENTS TUAKAU\CAD\ASBUIL\3\2011-01-AB600.DWG



LEGEND

ASBUILT

- PILLAR BOX
- HV POWER CABLE
- LV POWER CABLE
- HOUSE POWER CABLE
- DN100 PVC DUCT
- STREETLIGHT
- LINK BOX
- RING MAIN UNIT
- TRANSFORMER
- STAGE BOUNDARY

- NOTES**
1. COORDINATES ARE IN TERMS OF GD2000 MT EDEN CIRCUIT.
 2. CONSTRUCTION WAS UNDERTAKEN IN 2018 AND 2019.

I, RYAN JAMES PITKETHLEY, BELIEVE ON REASONABLE GROUNDS THAT THE PIPE SIZES, FITTINGS POSITIONS AND SCHEDULE OF CO-ORDINATES ARE CORRECT BASED ON THE INFORMATION SUPPLIED TO CIVILPLAN BY THE CONTRACTOR FOR THE WORK, TWOMEY CONSTRUCTION LTD.

RYAN JAMES PITKETHLEY
CMENGNZ CPENG 26.06.19
DATE

A	ASBUILT ISSUED	RIP	26.06.19
REV	REVISION DETAILS	BY	DATE

DRAWN:	DATE:
DKP	05.2019
CHECKED:	DATE:
MRR	26.06.19
APPROVED:	DATE:
RIP	26.06.19

THIS DRAWING (AND DESIGN) REMAINS THE PROPERTY OF CIVILPLAN CONSULTANTS LIMITED AND MAY NOT BE REPRODUCED OR ALTERED WITHOUT PRIOR AGREEMENT FROM CIVILPLAN CONSULTANTS LIMITED. CIVILPLAN CONSULTANTS LIMITED WILL NOT ACCEPT LIABILITY ARISING FROM UNAUTHORISED USE OF THIS DRAWING.

CIVILPLAN
CONSULTANTS

Level 3, 3 Osterley Way, Manukau, Auckland. Phone: 09 222 2445

PROJECT TITLE:
**HUGHES DEVELOPMENTS LIMITED
99 ESCOTT'S ROAD
TUAKAU**

SHEET TITLE:
**POWER SUPPLY ASBUILT PLAN
STAGE 1 - SHEET 2
SUB0311/18 & LUC0489/18**

ISSUE STATUS: **ASBUILT**

SCALE: (A1/A3) **1:500 / 1:1000**

SCALE BAR: 0 10 20 30 40 50m

DRAWING NUMBER: **2011-01-AB601** REV: **A**



LEGEND

ASBUILT

- HANDHOLE & HOUSE LEADS
- 1 WAY RIBBONET
- 4 WAY RIBBONET
- 12 WAY RIBBONET
- 26 WAY RIBBONET
- 4 WAY MICRONET
- DN100 PVC DUCT
- STAGE BOUNDARY

- NOTES**
- COORDINATES ARE IN TERMS OF GD2000 MT EDEN CIRCUIT.
 - CONSTRUCTION WAS UNDERTAKEN IN 2018 AND 2019.

I, RYAN JAMES PITKETHLEY, BELIEVE ON REASONABLE GROUNDS THAT THE PIPE SIZES, FITTINGS POSITIONS AND SCHEDULE OF CO-ORDINATES ARE CORRECT BASED ON THE INFORMATION SUPPLIED TO CIVILPLAN BY THE CONTRACTOR FOR THE WORK, TWOMEY CONSTRUCTION LTD.

RYAN JAMES PITKETHLEY
CMENGINZ CPENG 20.06.19
DATE

**SCHEDULE OF COORDINATES
HANDHOLES-GD2000**

POINT No.	mE	mN
HH 01	416241.34	757233.43
HH 02	416225.76	757203.95
HH 03	416210.10	757174.48
HH 04	416207.67	757125.25
HH 05	416182.78	757120.02
HH 06	416216.58	757101.87
HH 07	416252.40	757086.70
HH 08	416276.98	757088.76
HH 09	416307.95	757072.90
HH 10	416302.19	757060.80
HH 11	416323.88	757064.51
HH 12	416332.56	757045.03
HH 13	416363.44	757026.12
HH 14	416379.83	757017.29
HH 15	416370.82	757068.96
HH 16	416379.43	757085.22
HH 17	416364.97	757097.18
HH 18	416367.03	757100.95
HH 19	416397.23	757118.37
HH 20	416383.24	757130.70
HH 21	416385.04	757134.36
HH 22	416411.96	757152.83
HH 23	416373.91	757184.47
HH 24	416299.68	757220.50
HH 25	416309.20	757194.23
HH 26	416288.03	757189.59
HH 27	416290.88	757160.67
HH 28	416272.20	757160.25
HH 29	416273.26	757127.25
HH 30	416256.47	757130.86

Printed by: DAREN@27.06.19 // Filepath: S:\JOBS\2011 - HUGHES DEVELOPMENTS TUAKAU\CAD\ASBUILT\3\2011-01-AB610.DWG

B	AS BUILT	MRR	20.06.19
A	AS BUILT	MRR	18.06.19
REV	REVISION DETAILS	BY	DATE

DRAWN: DATE: 05.2019
 CHECKED: DATE: 19.06.19
 MRR 19.06.19
 APPROVED: DATE: 20.06.19
 RIP 20.06.19

THIS DRAWING (AND DESIGN) REMAINS THE PROPERTY OF CIVILPLAN CONSULTANTS LIMITED AND MAY NOT BE REPRODUCED OR ALTERED WITHOUT PRIOR AGREEMENT FROM CIVILPLAN CONSULTANTS LIMITED. CIVILPLAN CONSULTANTS LIMITED WILL NOT ACCEPT LIABILITY ARISING FROM UNAUTHORISED USE OF THIS DRAWING.

CIVILPLAN
CONSULTANTS

Level 3, 3 Osterley Way, Manukau, Auckland. Phone: 09 222 2445

PROJECT TITLE:
**HUGHES DEVELOPMENTS LIMITED
99 ESCOTTS ROAD
TUAKAU**

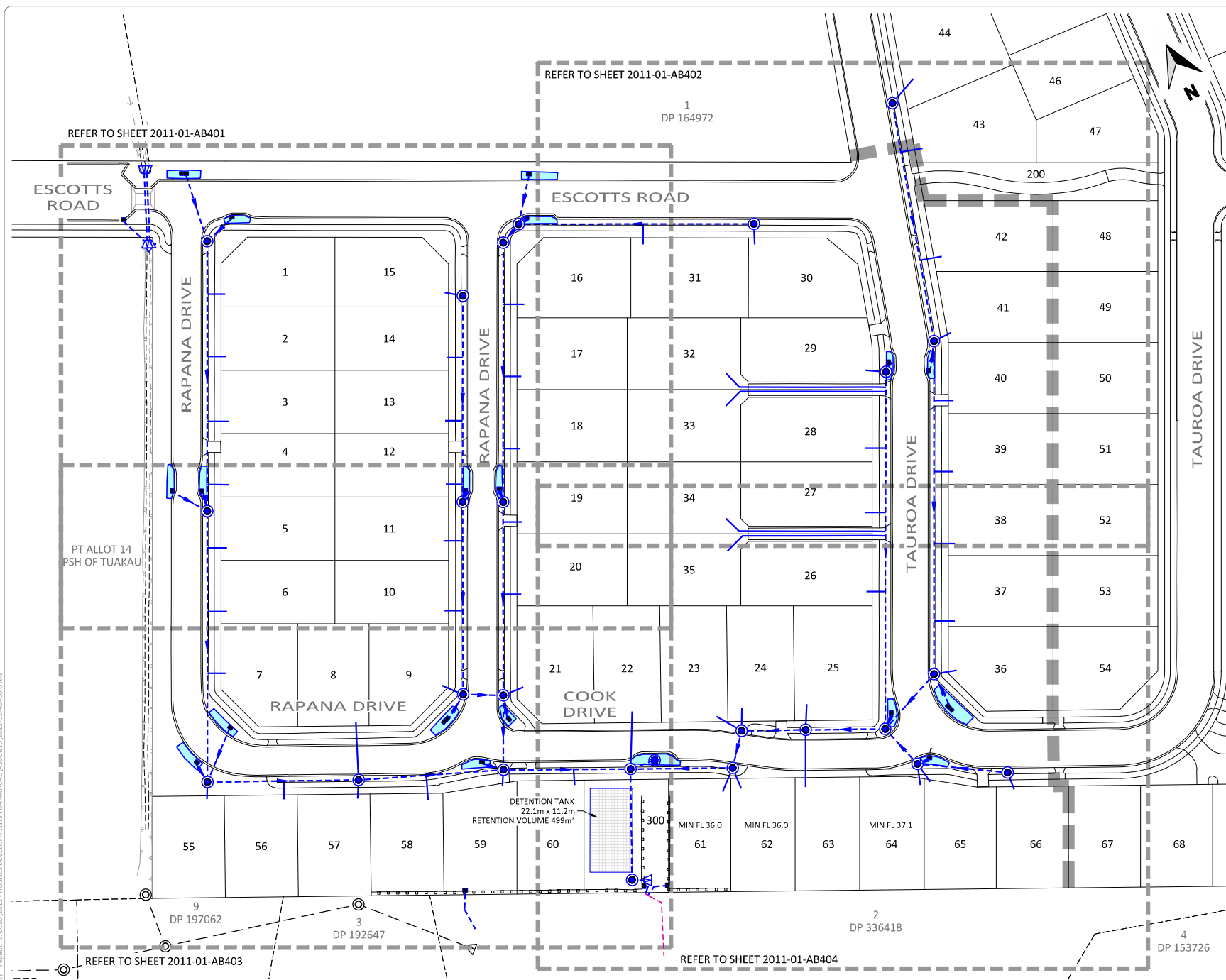
SHEET TITLE:
**CHORUS ASBUILT PLAN
STAGE 1 - SHEET 1
SUB0311/18 & LUC0489/18**

ISSUE STATUS: **AS BUILT**

SCALE: (A3/A4) **1:500 / 1:1000**

SCALE BAR: 0 10 20 30 40 50m

DRAWING NUMBER: **2011-01-AB610** REV: **B**



LEGEND

EXISTING

- (CR) PLOTTED FROM COUNCIL RECORDS
- DN1350 SW — STORMWATER LINE AND MANHOLE

ASBUILT

- DN300 — STORMWATER LINE AND MANHOLE
- X.Xm — STORMWATER CONNECTION
- STORMWATER CATCHPIT
- SCRUFFY DOME INLET/OUTLET MANHOLE
- STORMWATER INLET
- STORMWATER OUTLET
- RAIN GARDEN
- RECHARGE PIT
- RAIN GARDEN
- STORMWATER DETENTION TANK
- - - UNDERFILL DRAIN
- STAGE BOUNDARY

- NOTES**
- LEVELS ARE IN TERMS OF AUCKLAND VERTICAL DATUM.
 - COORDINATES ARE IN TERMS OF GD2000 MT EDEN CIRCUIT.
 - ALL STORMWATER LINES OVER DN150 ARE RCRRI.
 - ALL DN 100 & DN 150 STORMWATER LINES ARE uPVC DWV SN116 AS/NZ 1260.
 - ALL SINGLE CATCHPIT LEADS ARE DN225 RCRRI CLASS 4 PIPE.
 - ALL DOUBLE CATCHPIT LEADS ARE DN300 RCRRI CLASS 4 PIPE.
 - ALL INVERTS ARE MEASURED CLOCKWISE FROM THE OUTLET.
 - MANHOLES ARE 1050mm UNLESS SHOWN OTHERWISE.
 - SEE SHEET 2011-01-AB405-AB407 FOR RAIN GARDEN DETAILS.
 - SEE SHEET 2011-01-AB407 FOR CO-ORDINATE SCHEDULES.
 - CONSTRUCTION WAS UNDERTAKEN IN 2018 AND 2019.

I, RYAN JAMES PITKETHLEY, BELIEVE ON REASONABLE GROUNDS THAT THE PIPE SIZES, FITTINGS POSITIONS, SCHEDULE OF CO-ORDINATES AND LID LEVELS, ARE CORRECT BASED ON THE INFORMATION SUPPLIED TO CIVILPLAN BY THE CONTRACTOR FOR THE WORK, TWOMEY CONSTRUCTION LTD.

RYAN JAMES PITKETHLEY
CMENGNZ CPENG
26.06.2019
DATE

Printed by: MATT@27.06.19 // Filepath: S:\0803\2011 - HUGHES DEVELOPMENTS\TUAKAU\CAD\ASBUILTS\2011-01-AB400.DWG

NO.	DESCRIPTION	DATE
1	ASBUILT ISSUED	26.06.19
2	REVISION DETAILS	

DRAWN:	DATE:
DKP	05.2019
CHECKED:	DATE:
MRR	26.06.19
APPROVED:	DATE:
RIP	26.06.19

THIS DRAWING (AND DESIGN) REMAINS THE PROPERTY OF CIVILPLAN CONSULTANTS LIMITED AND MAY NOT BE REPRODUCED OR ALTERED WITHOUT PRIOR AGREEMENT FROM CIVILPLAN CONSULTANTS LIMITED. CIVILPLAN CONSULTANTS LIMITED WILL NOT ACCEPT LIABILITY ARISING FROM UNAUTHORISED USE OF THIS DRAWING.

CIVILPLAN CONSULTANTS

Level 3, 3 Osterley Way, Manukau, Auckland. Phone: 09 222 2445

PROJECT TITLE:
**HUGHES DEVELOPMENTS LIMITED
99 ESCOTTS ROAD
TUAKAU**

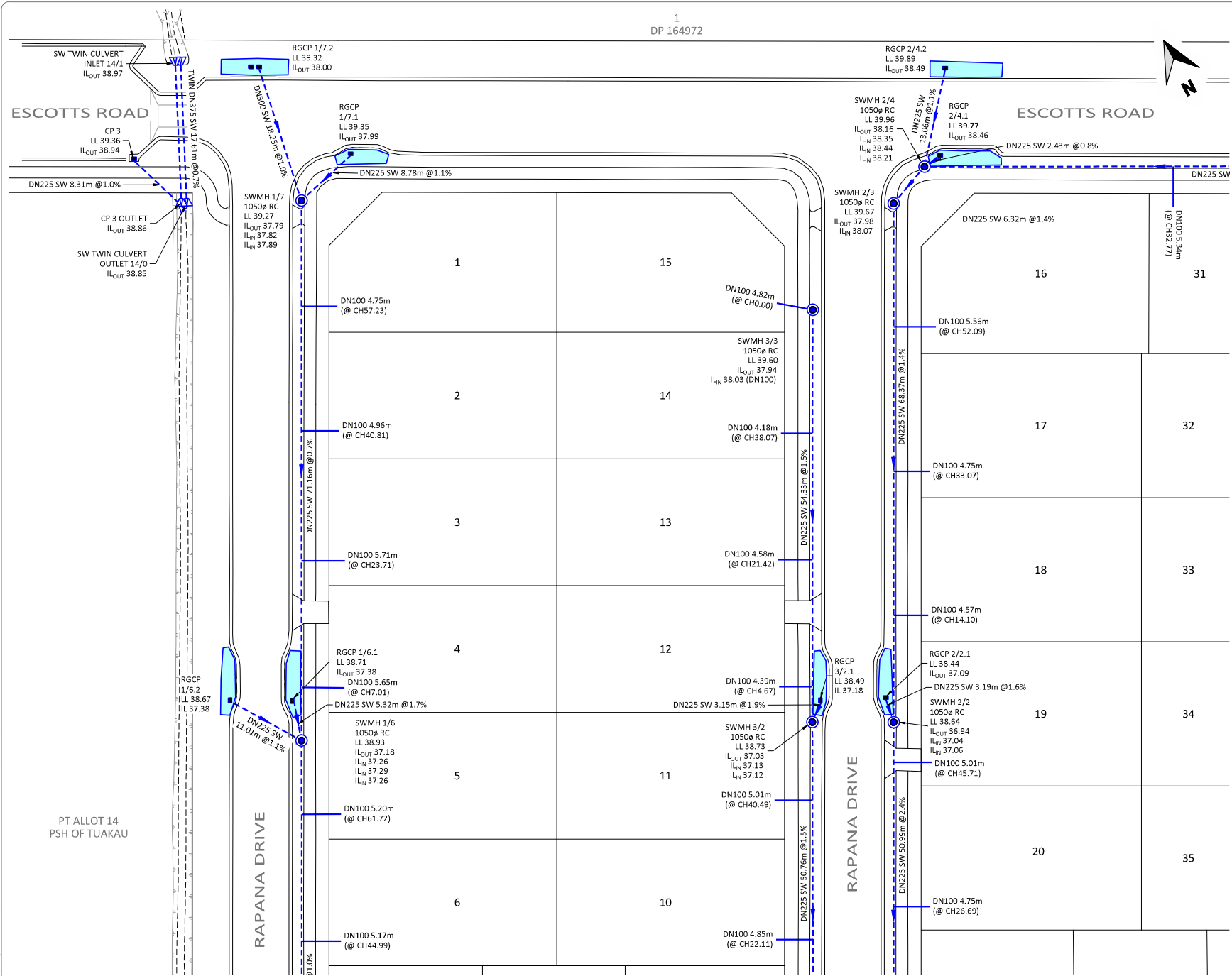
SHEET TITLE:
**STORMWATER ASBUILT
STAGE 1 - OVERALL LAYOUT
SUB0311/18 & LUC0489/18**

ISSUE STATUS: **ASBUILT**

SCALE: (A1/A3) **1:500 / 1:1000**

SCALE BAR: 0 10 20 30 40 50m

DRAWING NUMBER: **2011-01-AB400** REV: **A**



LEGEND EXISTING

(CR) PLOTTED FROM COUNCIL RECORDS

DN1350 SW STORMWATER LINE AND MANHOLE

ASBUILT

DN300 STORMWATER LINE AND MANHOLE

X.Xm STORMWATER CONNECTION

STORMWATER CATCHPIT

SCRUFFY DOME INLET/OUTLET MANHOLE

STORMWATER INLET

STORMWATER OUTLET

RAIN GARDEN

RECHARGE PIT

RAIN GARDEN

STORMWATER DETENTION TANK

UNDERFILL DRAIN

STAGE BOUNDARY

- ### NOTES
- LEVELS ARE IN TERMS OF AUCKLAND VERTICAL DATUM.
 - COORDINATES ARE IN TERMS OF GD2000 MT EDEM CIRCUIT.
 - ALL STORMWATER LINES OVER DN150 ARE RCRRJ.
 - ALL DN 100 & DN 150 STORMWATER LINES ARE uPVC DWV SN16 AS/NZ 1260.
 - ALL SINGLE CATCHPIT LEADS ARE DN225 RCRRJ CLASS 4 PIPE.
 - ALL DOUBLE CATCHPIT LEADS ARE DN300 RCRRJ CLASS 4 PIPE.
 - ALL INVERTS ARE MEASURED CLOCKWISE FROM THE OUTLET.
 - MANHOLES ARE 1050mm UNLESS SHOWN OTHERWISE.
 - SEE SHEET 2011-01-AB405-AB407 FOR RAIN GARDEN DETAILS.
 - SEE SHEET 2011-01-AB407 FOR CO-ORDINATE SCHEDULES.
 - CONSTRUCTION WAS UNDERTAKEN IN 2018 AND 2019.

I, RYAN JAMES PITKETHLEY, BELIEVE ON REASONABLE GROUNDS THAT THE PIPE SIZES, FITTINGS POSITIONS, SCHEDULE OF CO-ORDINATES AND LID LEVELS, ARE CORRECT BASED ON THE INFORMATION SUPPLIED TO CIVILPLAN BY THE CONTRACTOR FOR THE WORK, TWOMEY CONSTRUCTION LTD.

RYAN JAMES PITKETHLEY
CMENGNZ CPENG 26.06.2019
DATE

Printed by: MATT@27.06.19 // Filepath: S:\0805\2011 - HUGHES DEVELOPMENTS TUAKAU\CAD\ASBUILTS\2011-01-AB400.DWG

A	ASBUILT ISSUED	26.06.19	RP
REV	REVISION DETAILS	BY	DATE

DRAWN:	DATE:
DKP	05.2019
CHECKED:	DATE:
MRR	26.06.19
APPROVED:	DATE:
RP	26.06.19

THIS DRAWING (AND DESIGN) REMAINS THE PROPERTY OF CIVILPLAN CONSULTANTS LIMITED AND MAY NOT BE REPRODUCED OR ALTERED WITHOUT PRIOR AGREEMENT FROM CIVILPLAN CONSULTANTS LIMITED. CIVILPLAN CONSULTANTS LIMITED WILL NOT ACCEPT LIABILITY ARISING FROM UNAUTHORISED USE OF THIS DRAWING.

Level 3, 3 Osterley Way, Manukau, Auckland. Phone: 09 222 2445

PROJECT TITLE:
**HUGHES DEVELOPMENTS LIMITED
99 ESCOTT'S ROAD
TUAKAU**

SHEET TITLE:
**STORMWATER ASBUILT
STAGE 1 - DETAIL SHEET 1
SUB0311/18 & LUC0489/18**

ISSUE STATUS: **ASBUILT**

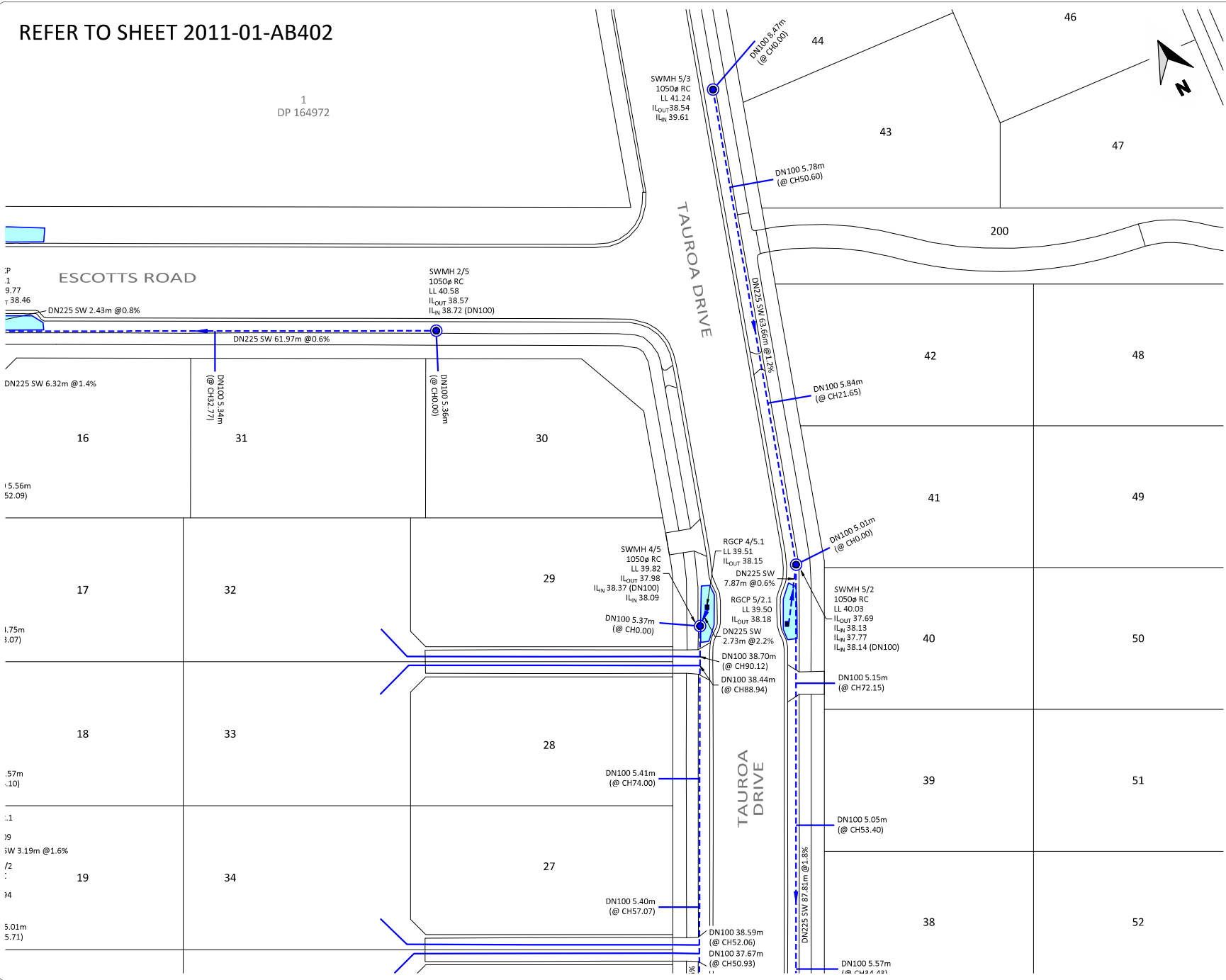
SCALE: (A3/A4) **1:250 / 1:500**

SCALE BAR: 0 5 10 15 20 25m

DRAWING NUMBER: **2011-01-AB401** REV: **A**

REFER TO SHEET 2011-01-AB402

1
DP 164972



LEGEND

EXISTING

- (CR) PLOTTED FROM COUNCIL RECORDS
- DN1350 SW STORMWATER LINE AND MANHOLE

ASBUILT

- DN300 STORMWATER LINE AND MANHOLE
- X.Xm STORMWATER CONNECTION
- STORMWATER CATCHPIT
- SCRUFFY DOME INLET/OUTLET MANHOLE
- STORMWATER INLET
- STORMWATER OUTLET
- RAIN GARDEN
- RECHARGE PIT
- RAIN GARDEN
- STORMWATER DETENTION TANK
- UNDERFILL DRAIN
- STAGE BOUNDARY

- NOTES**
- LEVELS ARE IN TERMS OF AUCKLAND VERTICAL DATUM.
 - COORDINATES ARE IN TERMS OF GD2000 MT EDEN CIRCUIT.
 - ALL STORMWATER LINES OVER DN150 ARE RCRRJ.
 - ALL DN 100 & DN 150 STORMWATER LINES ARE uPVC DWV SN16 AS/NZ 1260.
 - ALL SINGLE CATCHPIT LEADS ARE DN225 RCRRJ CLASS 4 PIPE.
 - ALL DOUBLE CATCHPIT LEADS ARE DN300 RCRRJ CLASS 4 PIPE.
 - ALL INVERTS ARE MEASURED CLOCKWISE FROM THE OUTLET.
 - MANHOLES ARE 1050mm UNLESS SHOWN OTHERWISE.
 - SEE SHEET 2011-01-AB405-AB407 FOR RAIN GARDEN DETAILS.
 - SEE SHEET 2011-01-AB407 FOR CO-ORDINATE SCHEDULES.
 - CONSTRUCTION WAS UNDERTAKEN IN 2018 AND 2019.

I, RYAN JAMES PITKETHLEY, BELIEVE ON REASONABLE GROUNDS THAT THE PIPE SIZES, FITTINGS POSITIONS, SCHEDULE OF CO-ORDINATES AND LID LEVELS, ARE CORRECT BASED ON THE INFORMATION SUPPLIED TO CIVILPLAN BY THE CONTRACTOR FOR THE WORK, TWOMEY CONSTRUCTION LTD.

RJP
 RYAN JAMES PITKETHLEY 26.06.2019
 CMENGNZ CPENG DATE

Printed by: MARTIN@27.06.19 // Filepath: S:\0805\2011 - HUGHES DEVELOPMENTS\TUAKAU\CAD\ASBUILTS\2011-01-AB400.DWG

NO.	DATE	BY	DESCRIPTION
1	26.06.19	RJP	ASBUILT ISSUED
2			REVISION DETAILS

DRAWN:	DATE:
DKP	05.2019
CHECKED:	DATE:
MRR	26.06.19
APPROVED:	DATE:
RJP	26.06.19

THIS DRAWING (AND DESIGN) REMAINS THE PROPERTY OF CIVILPLAN CONSULTANTS LIMITED AND MAY NOT BE REPRODUCED OR ALTERED WITHOUT PRIOR AGREEMENT FROM CIVILPLAN CONSULTANTS LIMITED. CIVILPLAN CONSULTANTS LIMITED WILL NOT ACCEPT LIABILITY ARISING FROM UNAUTHORISED USE OF THIS DRAWING.

CIVILPLAN CONSULTANTS
 Level 3, 3 Osterley Way, Manukau, Auckland. Phone: 09 222 2445

PROJECT TITLE:
 HUGHES DEVELOPMENTS LIMITED
 99 ESCOTT'S ROAD
 TUAKAU

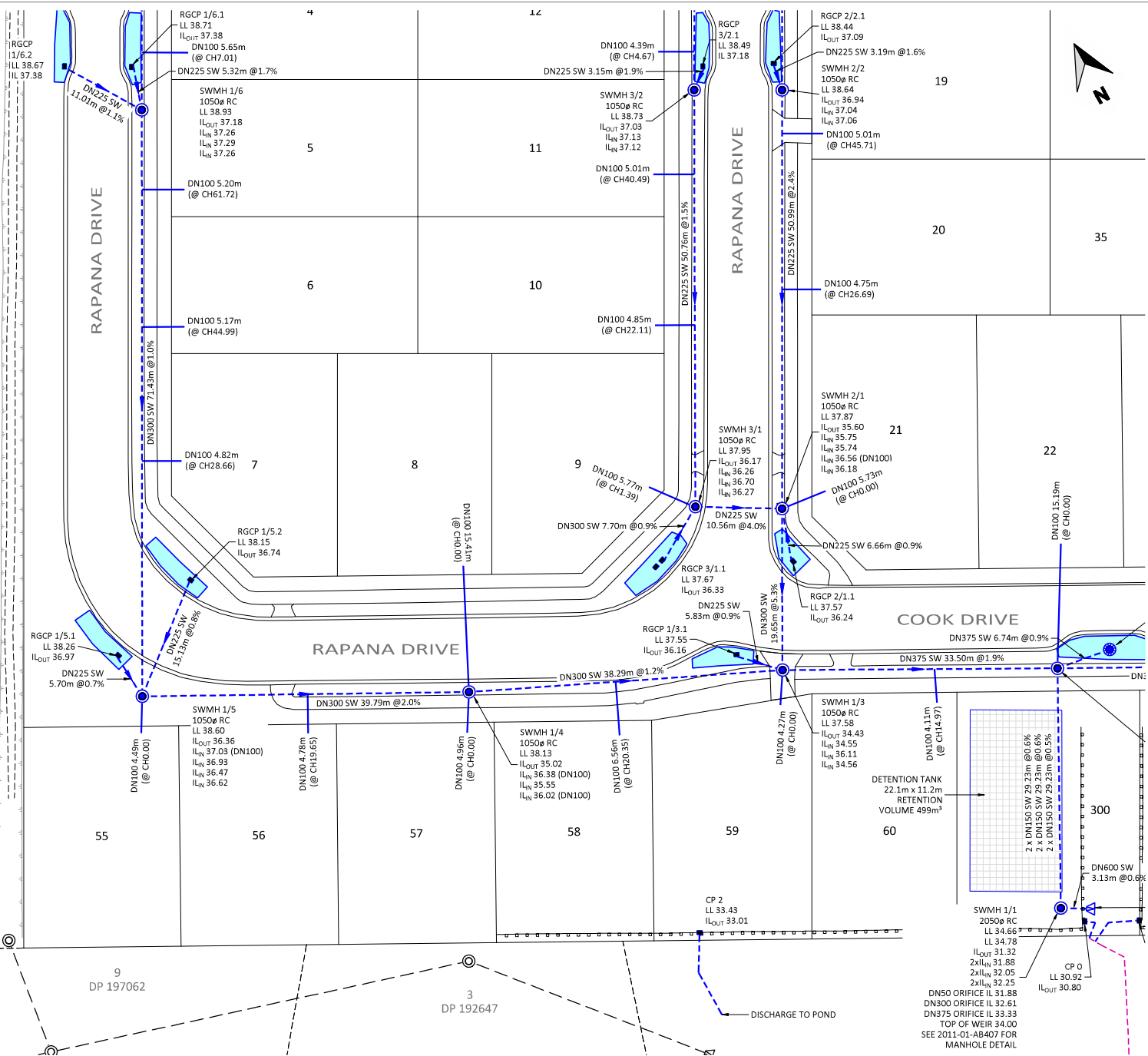
SHEET TITLE:
 STORMWATER ASBUILT
 STAGE 1 - DETAIL SHEET 2
 SUB0311/18 & LUC0489/18

ISSUE STATUS: **ASBUILT**

SCALE: (A1/A3) 1:250 / 1:500
 SCALE BAR 1:500(A3) 0 5 10 15 20 25m

DRAWING NUMBER: 2011-01-AB402 REV: A

PT ALLOT 14
PSH OF TUAKAU



LEGEND

EXISTING

- (CR) PLOTTED FROM COUNCIL RECORDS
- DN1350 SW STORMWATER LINE AND MANHOLE

ASBUILT

- DN300 STORMWATER LINE AND MANHOLE
- X.Xm STORMWATER CONNECTION
- STORMWATER CATCHPIT
- SCRUFFY DOME INLET/OUTLET MANHOLE
- STORMWATER INLET
- STORMWATER OUTLET
- RAIN GARDEN
- RECHARGE PIT
- RAIN GARDEN
- STORMWATER DETENTION TANK
- UNDERFILL DRAIN
- STAGE BOUNDARY

- ### NOTES
- LEVELS ARE IN TERMS OF AUCKLAND VERTICAL DATUM.
 - COORDINATES ARE IN TERMS OF GD2000 MT EDEN CIRCUIT.
 - ALL STORMWATER LINES OVER DN150 ARE RCRRJ.
 - ALL DN 100 & DN 150 STORMWATER LINES ARE uPVC DWV SN16 AS/NZ 1260.
 - ALL SINGLE CATCHPIT LEADS ARE DN225 RCRRJ CLASS 4 PIPE.
 - ALL DOUBLE CATCHPIT LEADS ARE DN300 RCRRJ CLASS 4 PIPE.
 - ALL INVERTS ARE MEASURED CLOCKWISE FROM THE OUTLET.
 - MANHOLES ARE 1050mm UNLESS SHOWN OTHERWISE.
 - SEE SHEET 2011-01-AB405-AB407 FOR RAIN GARDEN DETAILS.
 - SEE SHEET 2011-01-AB407 FOR CO-ORDINATE SCHEDULES.
 - CONSTRUCTION WAS UNDERTAKEN IN 2018 AND 2019.

I, RYAN JAMES PITKETHLEY, BELIEVE ON REASONABLE GROUNDS THAT THE PIPE SIZES, FITTINGS POSITIONS, SCHEDULE OF CO-ORDINATES AND LID LEVELS, ARE CORRECT BASED ON THE INFORMATION SUPPLIED TO CIVILPLAN BY THE CONTRACTOR FOR THE WORK, TWOMEY CONSTRUCTION LTD.

Ryan James Pitkethley

RYAN JAMES PITKETHLEY
CMENGNZ CPENG 26.06.2019
DATE

Printed by: NAIT@27.06.19 // Filepath: S:\0805\2011 - HUGHES DEVELOPMENTS TUAKAU\CAD\ASBUILTS\2011-01-AB400.DWG

A	ASBUILT ISSUED	RIP	26.06.19
REV	REVISION DETAILS	BY	DATE

DRAWN:	DATE:	DKP	05.2019
CHECKED:	DATE:	MRR	26.06.19
APPROVED:	DATE:	RIP	26.06.19

THIS DRAWING (AND DESIGN) REMAINS THE PROPERTY OF CIVILPLAN CONSULTANTS LIMITED AND MAY NOT BE REPRODUCED OR ALTERED WITHOUT PRIOR AGREEMENT FROM CIVILPLAN CONSULTANTS LIMITED. CIVILPLAN CONSULTANTS LIMITED WILL NOT ACCEPT LIABILITY ARISING FROM UNAUTHORISED USE OF THIS DRAWING.

CIVILPLAN CONSULTANTS

Level 3, 3 Osterley Way, Manukau, Auckland. Phone: 09 222 2445

PROJECT TITLE:
**HUGHES DEVELOPMENTS LIMITED
99 ESCOTTS ROAD
TUAKAU**

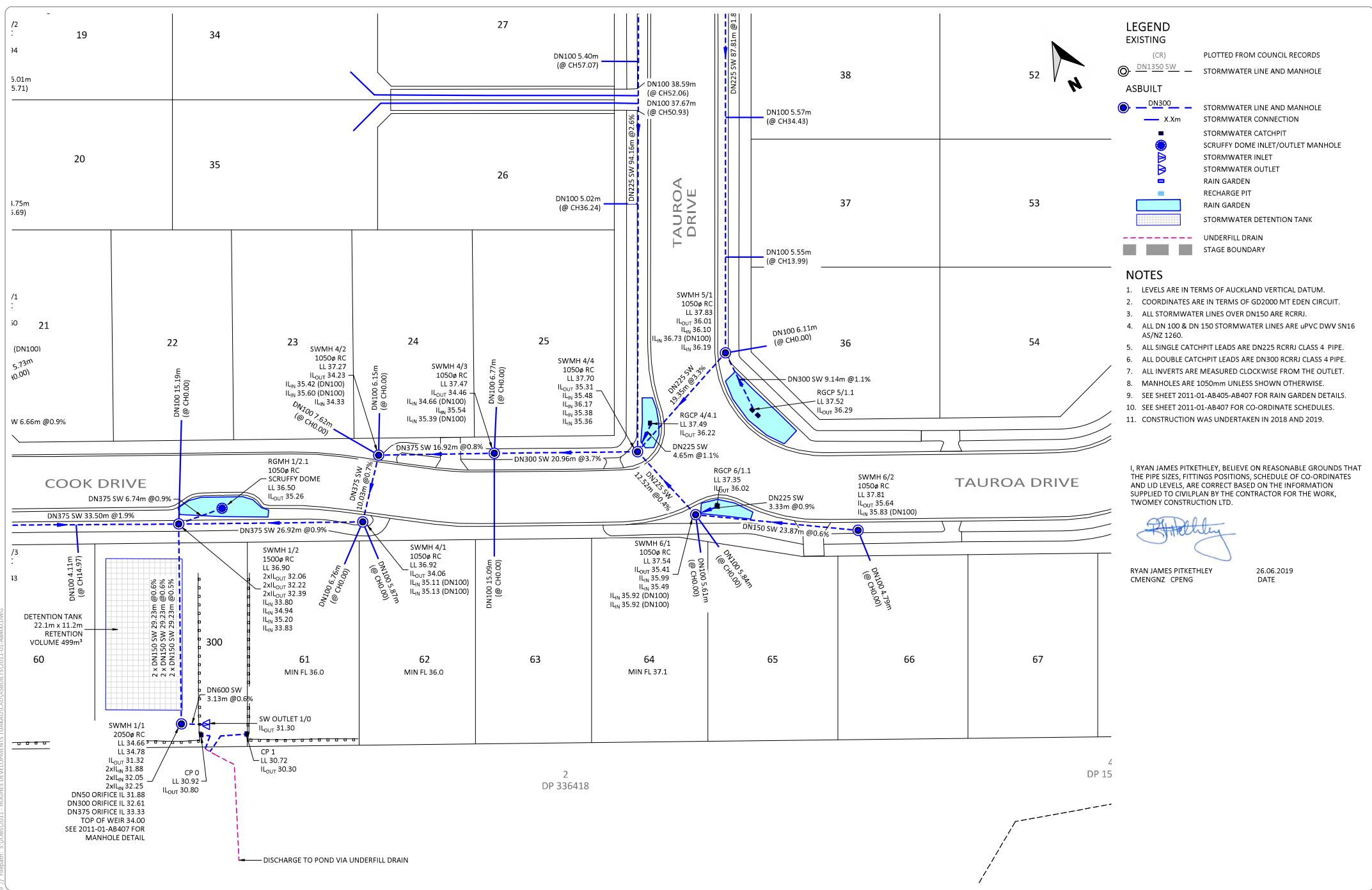
SHEET TITLE:
**STORMWATER ASBUILT
STAGE 1 - DETAIL SHEET 3
SUB0311/18 & LUC0489/18**

ISSUE STATUS: **ASBUILT**

SCALE: (A3/A4) **1:250 / 1:500**

SCALE BAR: 0 5 10 15 20 25m

DRAWING NUMBER: **2011-01-AB403** REV: **A**



LEGEND

EXISTING

- (CR) PLOTTED FROM COUNCIL RECORDS
- DN1350 SW — STORMWATER LINE AND MANHOLE

ASBUILT

- DN300 — STORMWATER LINE AND MANHOLE
- X.Xm — STORMWATER CONNECTION
- STORMWATER CATCHPIT
- SCRUFFY DOME INLET/OUTLET MANHOLE
- STORMWATER INLET
- STORMWATER OUTLET
- RAIN GARDEN
- RECHARGE PIT
- RAIN GARDEN
- STORMWATER DETENTION TANK
- UNDERFILL DRAIN
- STAGE BOUNDARY

- ### NOTES
- LEVELS ARE IN TERMS OF AUCKLAND VERTICAL DATUM.
 - COORDINATES ARE IN TERMS OF GD2000 MT EARTH CIRCUIT.
 - ALL STORMWATER LINES OVER DN150 ARE RCRRJ.
 - ALL DN 100 & DN 150 STORMWATER LINES ARE uPVC DWV SN116 AS/NZ 1260.
 - ALL SINGLE CATCHPIT LEADS ARE DN225 RCRRJ CLASS 4 PIPE.
 - ALL DOUBLE CATCHPIT LEADS ARE DN300 RCRRJ CLASS 4 PIPE.
 - ALL INVERTS ARE MEASURED CLOCKWISE FROM THE OUTLET.
 - MANHOLES ARE 1050mm UNLESS SHOWN OTHERWISE.
 - SEE SHEET 2011-01-AB405-AB407 FOR RAIN GARDEN DETAILS.
 - SEE SHEET 2011-01-AB407 FOR CO-ORDINATE SCHEDULES.
 - CONSTRUCTION WAS UNDERTAKEN IN 2018 AND 2019.

I, RYAN JAMES PITKETHLEY, BELIEVE ON REASONABLE GROUNDS THAT THE PIPE SIZES, FITTINGS POSITIONS, SCHEDULE OF CO-ORDINATES AND LID LEVELS, ARE CORRECT BASED ON THE INFORMATION SUPPLIED TO CIVILPLAN BY THE CONTRACTOR FOR THE WORK, TWOMEY CONSTRUCTION LTD.

R. Pitkethley
 RYAN JAMES PITKETHLEY
 CMENGNZ CPENG
 26.06.2019
 DATE

DETECTION TANK
 22.1m x 11.2m
 RETENTION VOLUME 499m³

2 x DN150 SW 29.23m @0.6%
 2 x DN150 SW 29.23m @0.6%
 2 x DN150 SW 29.23m @0.5%

SWMH 1/1
 2050ø RC
 LL 34.66
 LL 34.78
 IL_{OUT} 31.32
 2xIL_{IN} 31.88
 2xIL_{OUT} 32.05
 2xIL_{IN} 32.25
 DN50 ORIFICE IL 31.88
 DN300 ORIFICE IL 32.61
 DN375 ORIFICE IL 33.33
 TOP OF WEIR 34.00
 SEE 2011-01-AB407 FOR MANHOLE DETAIL

CP 0
 LL 30.92
 IL_{OUT} 30.80

CP 1
 LL 30.72
 IL_{OUT} 30.30

SW OUTLET 1/0
 IL_{OUT} 31.30

DN600 SW
 3.13m @0.6%

DISCHARGE TO POND VIA UNDERFILL DRAIN

DATE	BY	DATE
26.06.19	RIP	26.06.19
26.06.19	MR	26.06.19
26.06.19	DKP	05.2019

THIS DRAWING (AND DESIGN) REMAINS THE PROPERTY OF CIVILPLAN CONSULTANTS LIMITED AND MAY NOT BE REPRODUCED OR ALTERED WITHOUT PRIOR AGREEMENT FROM CIVILPLAN CONSULTANTS LIMITED. CIVILPLAN CONSULTANTS LIMITED WILL NOT ACCEPT LIABILITY ARISING FROM UNAUTHORISED USE OF THIS DRAWING.

CIVILPLAN CONSULTANTS

Level 3, 3 Osterley Way, Manukau, Auckland. Phone: 09 222 2445

PROJECT TITLE:
 HUGHES DEVELOPMENTS LIMITED
 99 ESCOTTES ROAD
 TUAKAU

SHEET TITLE:
 STORMWATER ASBUILT
 STAGE 1 - DETAIL SHEET 4
 SUB0311/18 & LUC0489/18

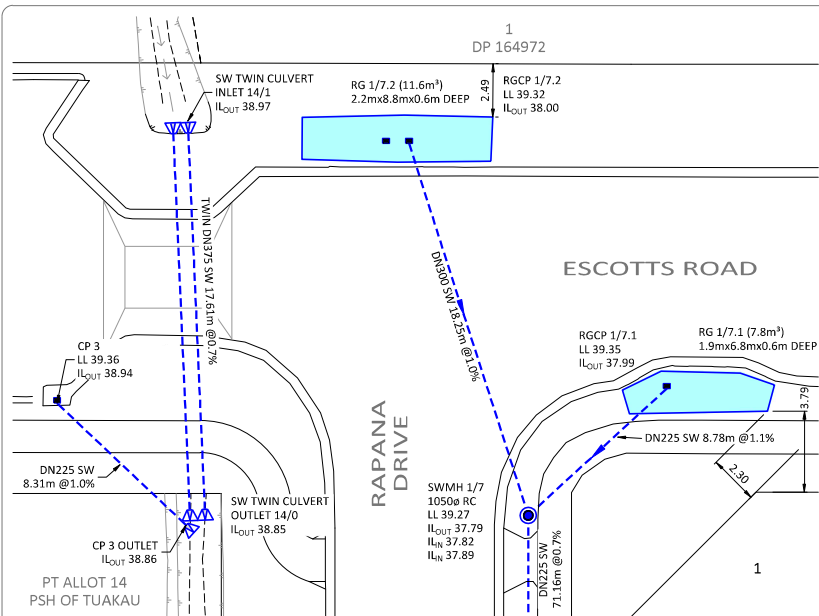
ISSUE STATUS: **ASBUILT**

SCALE: (A3/A4) 1:250 / 1:500

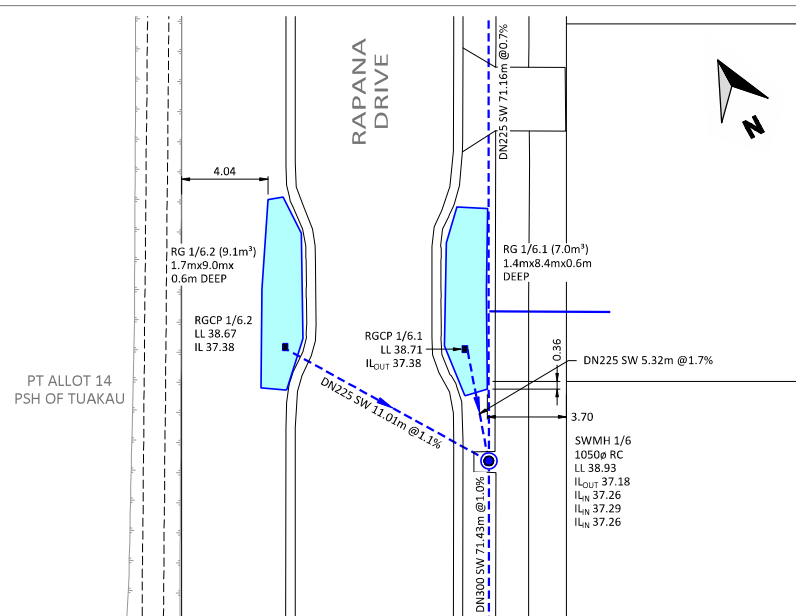
SCALE BAR 0 5 10 15 20 25m

DRAWING NUMBER: 2011-01-AB404 REV: A

Printed by: NAIT@27.06.19 // Filepath: S:\0805\2011 - HUGHES DEVELOPMENTS TUAKAU\CAD\ASBUILTS\2011-01-AB400.DWG



RAIN GARDEN DETAIL 1
SCALE: (A1/A3) 1:125/1:250



RAIN GARDEN DETAIL 2
SCALE: (A1/A3) 1:125/1:250

LEGEND

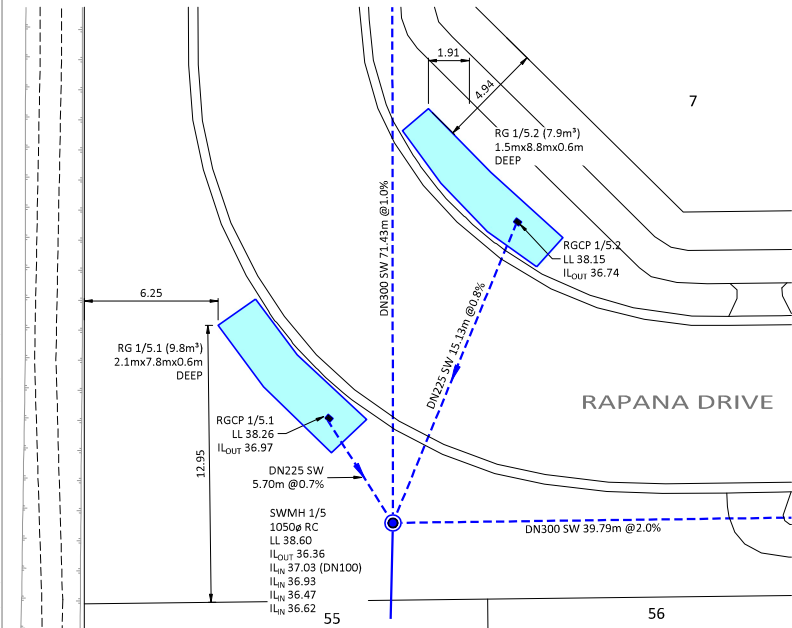
EXISTING

- (CR) PLOTTED FROM COUNCIL RECORDS
- DN1350 SW — STORMWATER LINE AND MANHOLE

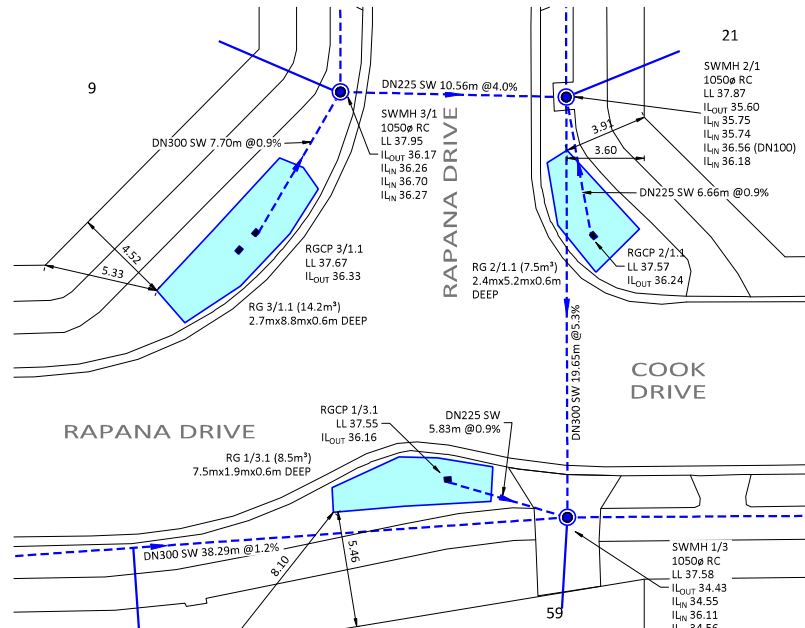
ASBUILT

- DN300 — STORMWATER LINE AND MANHOLE
- X.Xm — STORMWATER CONNECTION
- STORMWATER CATCHPIT
- SCRUFFY DOME INLET/OUTLET MANHOLE
- STORMWATER INLET
- STORMWATER OUTLET
- RAIN GARDEN
- RECHARGE PIT
- RAIN GARDEN
- STORMWATER DETENTION TANK
- UNDERFILL DRAIN
- STAGE BOUNDARY

- NOTES**
- LEVELS ARE IN TERMS OF AUCKLAND VERTICAL DATUM.
 - COORDINATES ARE IN TERMS OF GD2000 MT EDEN CIRCUIT.
 - ALL STORMWATER LINES OVER DN150 ARE RCRRJ.
 - ALL DN 100 & DN 150 STORMWATER LINES ARE uPVC DWV SN16 AS/NZ 1260.
 - ALL SINGLE CATCHPIT LEADS ARE DN225 RCRRJ CLASS 4 PIPE.
 - ALL DOUBLE CATCHPIT LEADS ARE DN300 RCRRJ CLASS 4 PIPE.
 - ALL INVERTS ARE MEASURED CLOCKWISE FROM THE OUTLET.
 - MANHOLES ARE 1050mm UNLESS SHOWN OTHERWISE.
 - SEE SHEET 2011-01-AB405-AB407 FOR RAIN GARDEN DETAILS.
 - SEE SHEET 2011-01-AB407 FOR CO-ORDINATE SCHEDULES.
 - CONSTRUCTION WAS UNDERTAKEN IN 2018 AND 2019.



RAIN GARDEN DETAIL 3
SCALE: (A1/A3) 1:125/1:250



RAIN GARDEN DETAIL 4
SCALE: (A1/A3) 1:125/1:250

I, RYAN JAMES PITKETHLEY, BELIEVE ON REASONABLE GROUNDS THAT THE PIPE SIZES, FITTINGS POSITIONS, SCHEDULE OF CO-ORDINATES AND LID LEVELS, ARE CORRECT BASED ON THE INFORMATION SUPPLIED TO CIVILPLAN BY THE CONTRACTOR FOR THE WORK, TWOMEY CONSTRUCTION LTD.

Ryan James Pitkethley

RYAN JAMES PITKETHLEY
CMENGNZ CPENG 26.06.2019
DATE



KEYPLAN

Printed by: NAIT@27.06.19 // Filepath: S:\0305\2011 - HUGHES DEVELOPMENTS TUAKAU\CAD\ASBUILTS\2011-01-AB400.DWG

A	ASBUILT ISSUED	RIP	26.06.19
REV	REVISION/DETAILS	BY	DATE

DRAWN: DATE: 05.2019	DKP
CHECKED: DATE: 26.06.19	MRR
APPROVED: DATE: 26.06.19	RIP

THIS DRAWING (AND DESIGN) REMAINS THE PROPERTY OF CIVILPLAN CONSULTANTS LIMITED AND MAY NOT BE REPRODUCED OR ALTERED WITHOUT PRIOR AGREEMENT FROM CIVILPLAN CONSULTANTS LIMITED. CIVILPLAN CONSULTANTS LIMITED WILL NOT ACCEPT LIABILITY ARISING FROM UNAUTHORISED USE OF THIS DRAWING.

CIVILPLAN CONSULTANTS

Level 3, 3 Osterley Way, Manukau, Auckland. Phone: 09 222 2445

PROJECT TITLE:
**HUGHES DEVELOPMENTS LIMITED
99 ESCOTTS ROAD
TUAKAU**

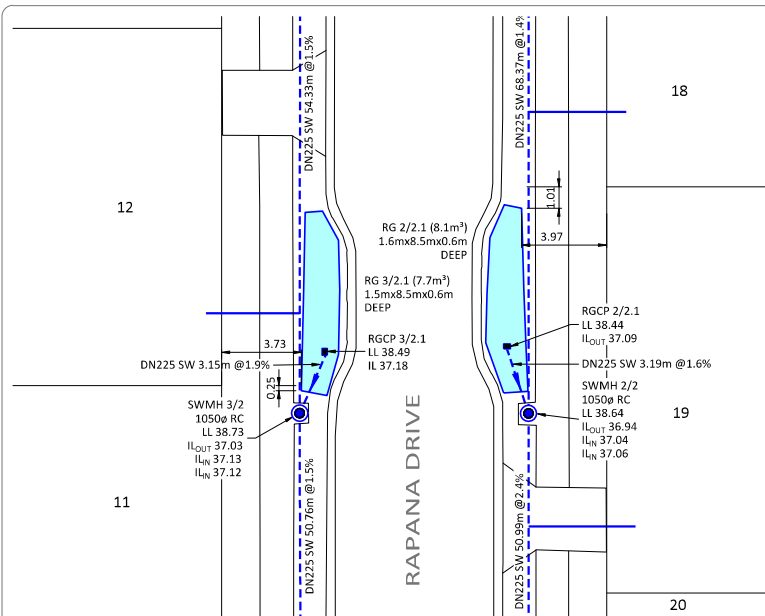
SHEET TITLE:
**STORMWATER ASBUILT
STAGE 1 - RAIN GARDEN - DETAIL SHEET 1
SUB0311/18 & LUC0489/18**

ISSUE STATUS: **ASBUILT**

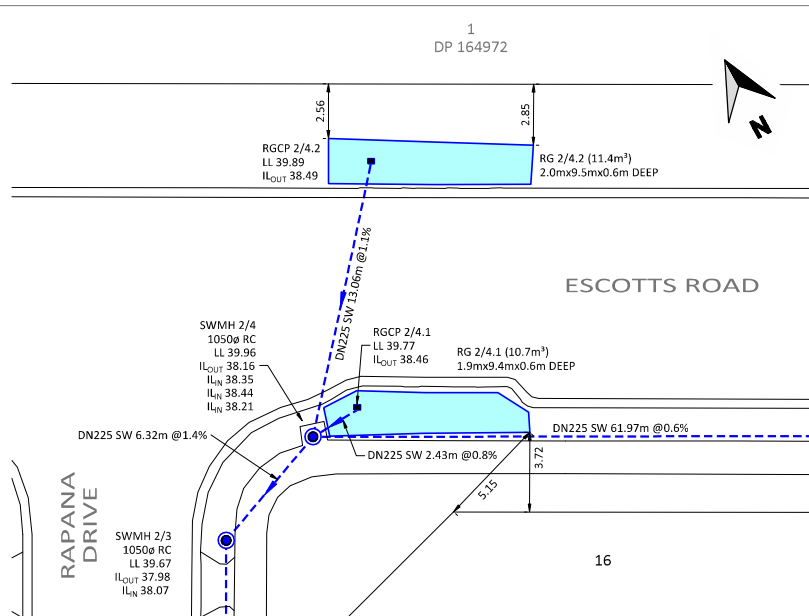
SCALE: (A1/A3) **1:125 / 1:250**

SCALE BAR: 0 2.5 5 7.5 10 12.5m

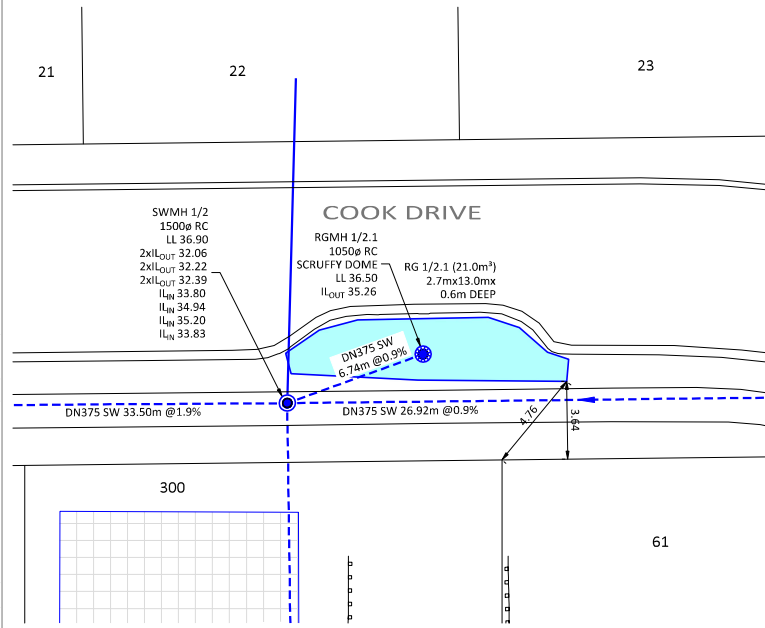
DRAWING NUMBER: **2011-01-AB405** REV: **A**



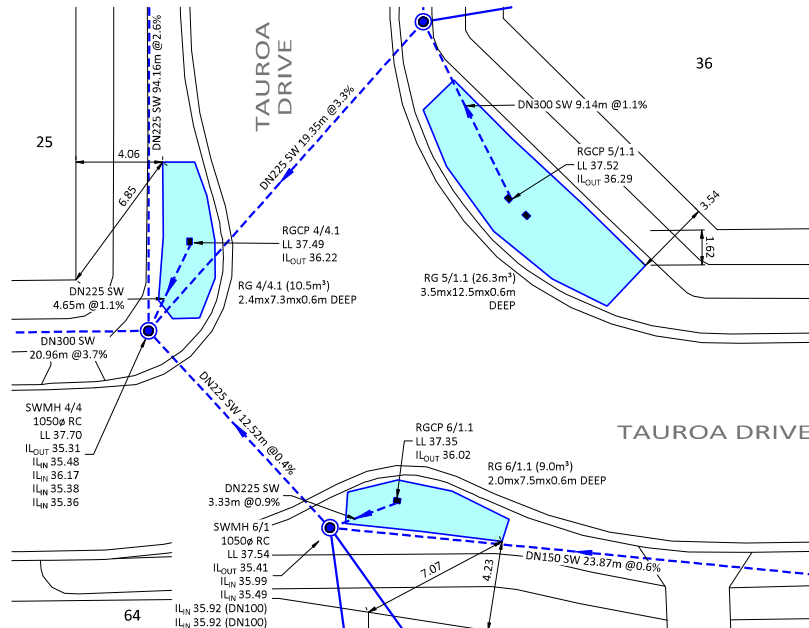
RAIN GARDEN DETAIL 5
SCALE: (A1/A3) 1:125/1:250



RAIN GARDEN DETAIL 6
SCALE: (A1/A3) 1:125/1:250



RAIN GARDEN DETAIL 7
SCALE: (A1/A3) 1:125/1:250



RAIN GARDEN DETAIL 8
SCALE: (A1/A3) 1:125/1:250

LEGEND

EXISTING

- (CR) PLOTTED FROM COUNCIL RECORDS
- DN1350 SW STORMWATER LINE AND MANHOLE

ASBUILT

- DN300 STORMWATER LINE AND MANHOLE
- X.Xm STORMWATER CONNECTION
- STORMWATER CATCHPIT
- SCRUFFY DOME INLET/OUTLET MANHOLE
- STORMWATER INLET
- STORMWATER OUTLET
- RAIN GARDEN
- RECHARGE PIT
- RAIN GARDEN
- STORMWATER DETENTION TANK
- UNDERRILL DRAIN
- STAGE BOUNDARY

- NOTES**
- LEVELS ARE IN TERMS OF AUCKLAND VERTICAL DATUM.
 - COORDINATES ARE IN TERMS OF GD2000 MT EARTH CIRCUIT.
 - ALL STORMWATER LINES OVER DN150 ARE RCRRJ.
 - ALL DN 100 & DN 150 STORMWATER LINES ARE uPVC DWV SN16 AS/NZ 1260.
 - ALL SINGLE CATCHPIT LEADS ARE DN225 RCRRJ CLASS 4 PIPE.
 - ALL DOUBLE CATCHPIT LEADS ARE DN300 RCRRJ CLASS 4 PIPE.
 - ALL INVERTS ARE MEASURED CLOCKWISE FROM THE OUTLET.
 - MANHOLES ARE 1050mm UNLESS SHOWN OTHERWISE.
 - SEE SHEET 2011-01-AB405-AB407 FOR RAIN GARDEN DETAILS.
 - SEE SHEET 2011-01-AB407 FOR CO-ORDINATE SCHEDULES.
 - CONSTRUCTION WAS UNDERTAKEN IN 2018 AND 2019.

I, RYAN JAMES PITKETHLEY, BELIEVE ON REASONABLE GROUNDS THAT THE PIPE SIZES, FITTINGS POSITIONS, SCHEDULE OF CO-ORDINATES AND LID LEVELS, ARE CORRECT BASED ON THE INFORMATION SUPPLIED TO CIVILPLAN BY THE CONTRACTOR FOR THE WORK, TWOMEY CONSTRUCTION LTD.

Ryan James Pitkethley
RYAN JAMES PITKETHLEY
CMENGNZ CPENG 26.06.2019
DATE



KEYPLAN

Printed by: NAITT@27.06.19 // Filepath: S:\0805\2011 - HUGHES DEVELOPMENTS\TUAKAU\CAD\ASBUILTS\2011-01-AB400.DWG

A	ASBUILT ISSUED	RIP	26.06.19
REV	REVISION DETAILS	BY	DATE

DRAWN	DATE
DKP	05.2019
CHECKED	DATE
MRR	26.06.19
APPROVED	DATE
RIP	26.06.19

THIS DRAWING (AND DESIGN) REMAINS THE PROPERTY OF CIVILPLAN CONSULTANTS LIMITED AND MAY NOT BE REPRODUCED OR ALTERED WITHOUT PRIOR AGREEMENT FROM CIVILPLAN CONSULTANTS LIMITED. CIVILPLAN CONSULTANTS LIMITED WILL NOT ACCEPT LIABILITY ARISING FROM UNAUTHORISED USE OF THIS DRAWING.

CIVILPLAN CONSULTANTS

Level 3, 3 Osterley Way, Manukau, Auckland. Phone: 09 222 2445

PROJECT TITLE:
**HUGHES DEVELOPMENTS LIMITED
99 ESCOTTS ROAD
TUAKAU**

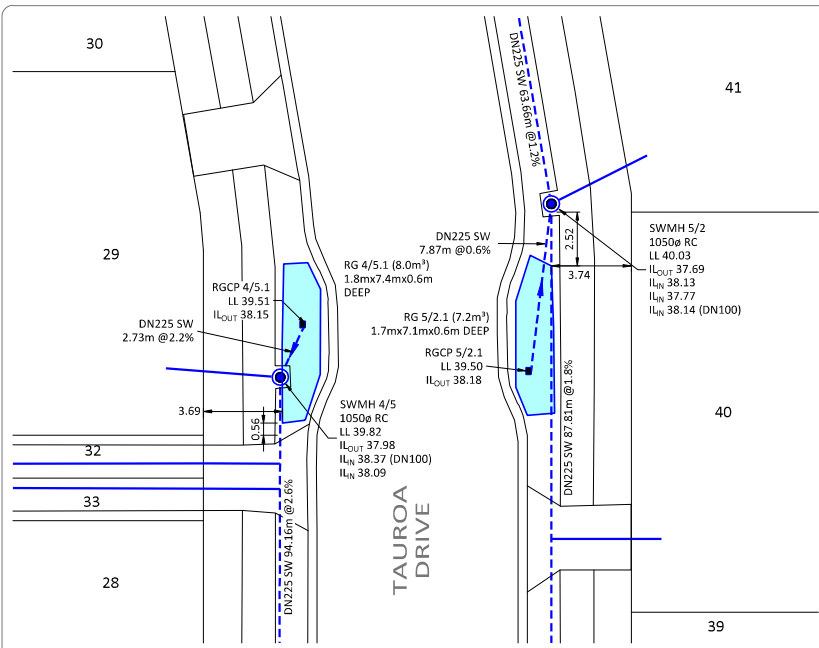
SHEET TITLE:
**STORMWATER ASBUILT
STAGE 1 - RAIN GARDEN - DETAIL SHEET 2
SUB0311/18 & LUC0489/18**

ISSUE STATUS: **ASBUILT**

SCALE: (A1/A3) **1:125 / 1:250**

SCALE BAR: 0 2.5 5 7.5 10 12.5m

DRAWING NUMBER: **2011-01-AB406** REV: **A**



RAIN GARDEN DETAIL 9
SCALE: (A1/A3) 1:125/1:250

**SCHEDULE OF COORDINATES
SW MANHOLES-GD2000**

POINT No.	mE	mN
SWMH 1/0	416269.23	757047.26
SWMH 1/1	416266.50	757048.79
SWMH 1/2	416279.91	757074.76
SWMH 1/3	416250.26	757090.35
SWMH 1/4	416215.31	757105.98
SWMH 1/5	416179.97	757124.26
SWMH 1/6	416213.56	757187.29
SWMH 1/7	416247.07	757250.07
SWMH 2/1	416259.47	757107.71
SWMH 2/2	416283.49	757152.69
SWMH 2/3	416315.70	757212.99
SWMH 2/4	416321.57	757215.35
SWMH 2/5	416376.27	757186.22
SWMH 3/1	416250.27	757112.89
SWMH 3/2	416274.06	757157.74
SWMH 3/3	416299.70	757205.63
SWMH 4/1	416303.80	757062.35
SWMH 4/2	416310.45	757069.87
SWMH 4/3	416325.50	757062.14
SWMH 4/4	416344.09	757052.47
SWMH 4/5	416388.61	757135.44
SWMH 5/1	416362.23	757059.17
SWMH 5/2	416403.61	757136.62
SWMH 5/3	416423.48	757197.10
SWMH 6/1	416347.23	757040.35
SWMH 6/2	416367.11	757027.14



**LEGEND
EXISTING**

(CR) PLOTTED FROM COUNCIL RECORDS
 DN1350 SW — STORMWATER LINE AND MANHOLE

ASBUILT

DN300 — STORMWATER LINE AND MANHOLE
 X.Xm — STORMWATER CONNECTION
 — STORMWATER CATCHPIT
 — SCRUFFY DOME INLET/OUTLET MANHOLE
 — STORMWATER INLET
 — STORMWATER OUTLET
 — RAIN GARDEN
 — RECHARGE PIT
 — RAIN GARDEN
 — STORMWATER DETENTION TANK
 — UNDERFILL DRAIN
 — STAGE BOUNDARY

NOTES

- LEVELS ARE IN TERMS OF AUCKLAND VERTICAL DATUM.
- COORDINATES ARE IN TERMS OF GD2000 MT EDEN CIRCUIT.
- ALL STORMWATER LINES OVER DN150 ARE RCRRJ.
- ALL DN 100 & DN 150 STORMWATER LINES ARE uPVC DWV SN16 AS/NZ 1260.
- ALL SINGLE CATCHPIT LEADS ARE DN225 RCRRJ CLASS 4 PIPE.
- ALL DOUBLE CATCHPIT LEADS ARE DN300 RCRRJ CLASS 4 PIPE.
- ALL INVERTS ARE MEASURED CLOCKWISE FROM THE OUTLET.
- MANHOLES ARE 1050mm UNLESS SHOWN OTHERWISE.
- SEE SHEET 2011-01-AB405-AB407 FOR RAIN GARDEN DETAILS.
- SEE SHEET 2011-01-AB407 FOR CO-ORDINATE SCHEDULES.
- CONSTRUCTION WAS UNDERTAKEN IN 2018 AND 2019.

**SCHEDULE OF COORDINATES
RAINGARDEN CATCHPITS-GD2000**

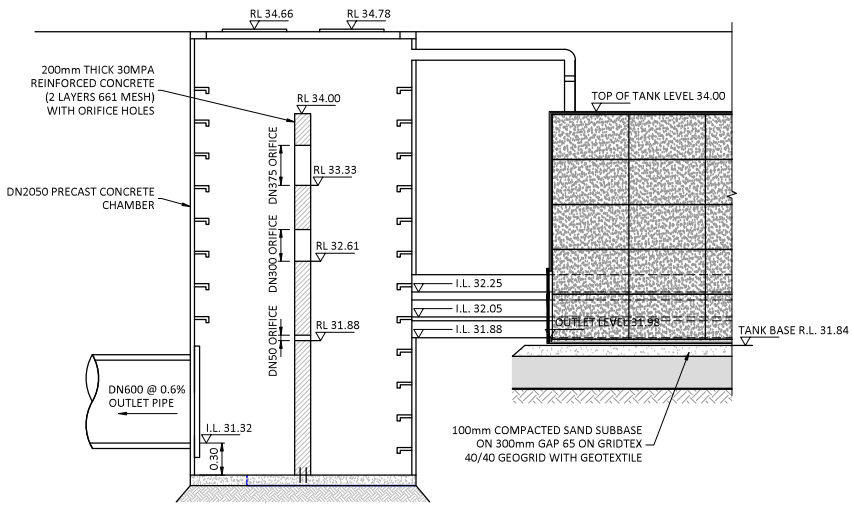
POINT No.	mE	mN
RG 1/2.1	416286.58	757073.79
RG 1/3.1	416246.12	757094.44
RG 1/5.1	416179.53	757129.94
RG 1/5.2	416191.64	757133.89
RG 1/6.1	416215.14	757192.38
RG 1/6.2	416207.56	757196.53
RG 1/7.1	416255.58	757252.25
RG 1/7.2	416250.35	757268.04
RG 2/1.1	416257.43	757101.37
RG 2/2.1	416284.02	757155.83
RG 2/4.1	416323.99	757215.49
RG 2/4.2	416329.98	757225.34
RG 3/1.1	416243.72	757108.85
RG 3/2.1	416276.54	757159.67
RG 4/4.1	416347.86	757055.20
RG 4/5.1	416390.80	757137.07
RG 5/1.1	416361.97	757050.03
RG 5/2.1	416399.09	757130.17
RG 6/1.1	416350.53	757039.90

I, RYAN JAMES PITKETHLEY, BELIEVE ON REASONABLE GROUNDS THAT THE PIPE SIZES, FITTINGS POSITIONS, SCHEDULE OF CO-ORDINATES AND LID LEVELS, ARE CORRECT BASED ON THE INFORMATION SUPPLIED TO CIVILPLAN BY THE CONTRACTOR FOR THE WORK, TWOMEY CONSTRUCTION LTD.

RYAN JAMES PITKETHLEY
CMENGNZ CPENG 26.06.2019
DATE

**SCHEDULE OF COORDINATES
CATCHPITS-GD2000**

POINT No.	mE	mN
CP 0	416268.13	757046.12
CP 1	416274.42	757042.89
CP 2	416226.18	757066.69



STORMWATER MANHOLE 1/1 DETAIL
SCALE: (A1/A3) 1:125/1:250



KEYPLAN

Printed by: NAITT@27.06.19 // Filepath: S:\0080\2011 - HUGHES DEVELOPMENTS\TUAKAU\CAD\ASBUILTS\2011-01-AB400.DWG

A	ASBUILT ISSUED	RIP	26.06.19
REV	REVISION DETAILS	BY	DATE

DRAWN:	DATE:
DKP	05.2019
CHECKED:	DATE:
MRR	26.06.19
APPROVED:	DATE:
RIP	26.06.19

THIS DRAWING (AND DESIGN) REMAINS THE PROPERTY OF CIVILPLAN CONSULTANTS LIMITED AND MAY NOT BE REPRODUCED OR ALTERED WITHOUT PRIOR AGREEMENT FROM CIVILPLAN CONSULTANTS LIMITED. CIVILPLAN CONSULTANTS LIMITED WILL NOT ACCEPT LIABILITY ARISING FROM UNAUTHORISED USE OF THIS DRAWING.

CIVILPLAN CONSULTANTS
Level 3, 3 Osterley Way, Manukau, Auckland. Phone: 09 222 2445

PROJECT TITLE:
**HUGHES DEVELOPMENTS LIMITED
99 ESCOTTS ROAD
TUAKAU**

SHEET TITLE:
**STORMWATER ASBUILT
STAGE 1 - RAIN GARDEN - DETAIL SHEET 3
SUB0311/18 & LUC0489/18**

ISSUE STATUS: **ASBUILT**
SCALE: (A1/A3) **1:125 / 1:250**
SCALE BAR: 0 2.5 5 7.5 10 12.5m
DRAWING NUMBER: **2011-01-AB407** REV: **A**

ESCOTTS ROAD

ESCOTTS ROAD



LEGEND

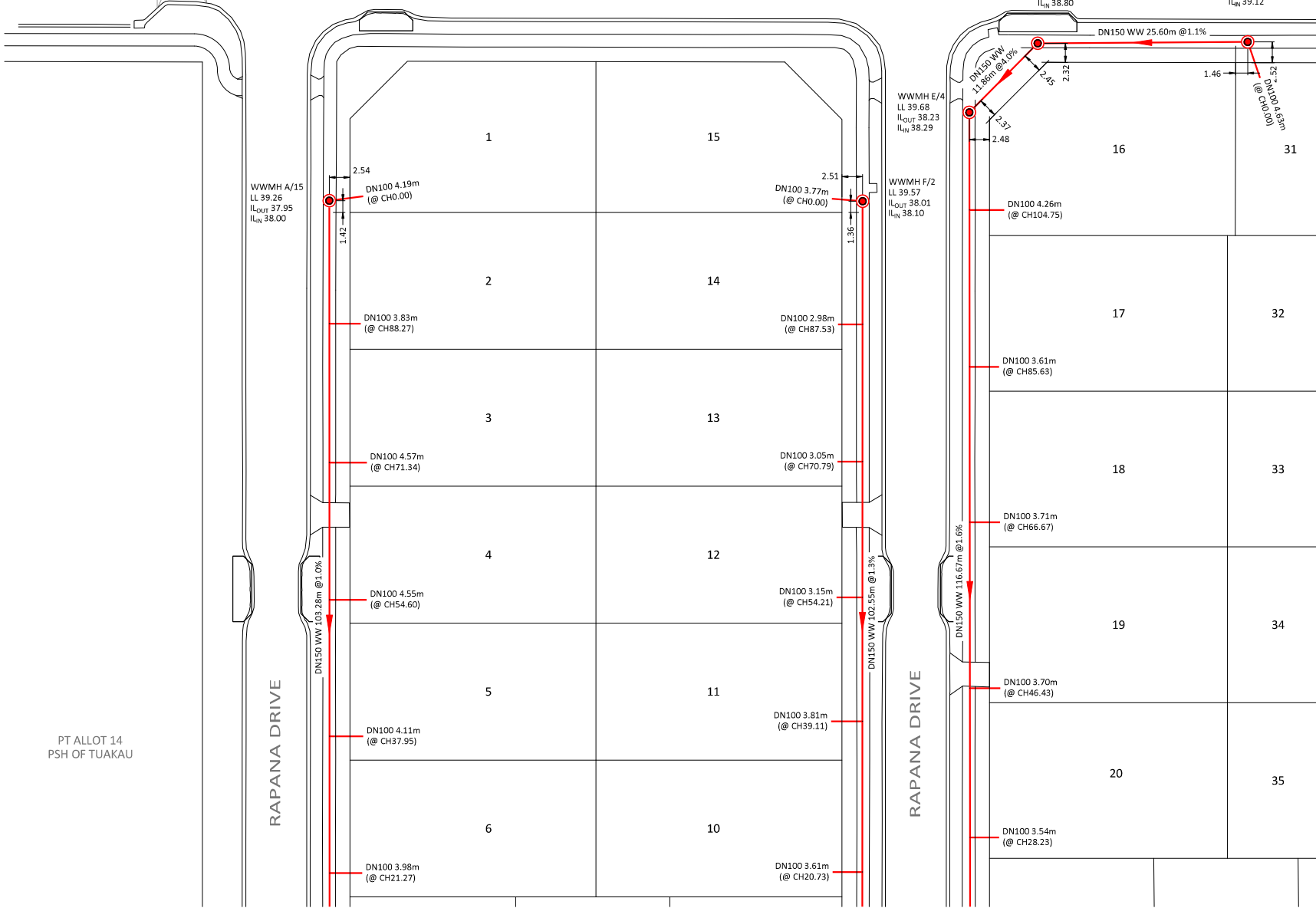
- EXISTING**
- (CR) PLOTTED FROM COUNCIL RECORDS
 - STORMWATER LINE AND MANHOLE
- ASBUILT**
- STORMWATER LINE AND MANHOLE
 - X.Xm STORMWATER CONNECTION
 - STAGE BOUNDARY

NOTES

1. LEVELS ARE IN TERMS OF AUCKLAND VERTICAL DATUM.
2. COORDINATES ARE IN TERMS OF GD2000 MT EDEN CIRCUIT.
3. ALL WASTEWATER LINES ARE DN150 uPVC SN16 TO AS/NZS1260.
4. ALL WASTEWATER CONNECTIONS ARE DN100 uPVC SN16 TO AS/NZS1260.
5. ALL INVERTS ARE MEASURED CLOCKWISE FROM THE OUTLET.
6. MANHOLES ARE 1050mm UNLESS SHOWN OTHERWISE.
7. SEE SHEET 2011-01-AB410 FOR CO-ORDINATE SCHEDULE.
8. CONSTRUCTION WAS UNDERTAKEN IN 2018 AND 2019.

I, RYAN JAMES PITKETHLEY, BELIEVE ON REASONABLE GROUNDS THAT THE PIPE SIZES, FITTINGS POSITIONS, SCHEDULE OF CO-ORDINATES AND LID LEVELS, ARE CORRECT BASED ON THE INFORMATION SUPPLIED TO CIVILPLAN BY THE CONTRACTOR FOR THE WORK, TWOMEY CONSTRUCTION LTD.

RYAN JAMES PITKETHLEY
CMENGNZ CPENG
26.06.2019
DATE



Printed by: DAREN@27.06.19 // Filepath: S:\JOBS\2011 - HUGHES DEVELOPMENTS TUAKAU\CAD\ASBUILT\2011-01-AB410.DWG

REV	ASBUILT ISSUED	DATE
A	26.06.19	26.06.19
B		
C		
D		
E		

DRAWN:	DATE:
DKP	05.2019
CHECKED:	DATE:
MRR	26.06.19
APPROVED:	DATE:
RIP	26.06.19

THIS DRAWING (AND DESIGN) REMAINS THE PROPERTY OF CIVILPLAN CONSULTANTS LIMITED AND MAY NOT BE REPRODUCED OR ALTERED WITHOUT PRIOR AGREEMENT FROM CIVILPLAN CONSULTANTS LIMITED. CIVILPLAN CONSULTANTS LIMITED WILL NOT ACCEPT LIABILITY ARISING FROM UNAUTHORISED USE OF THIS DRAWING.

CIVILPLAN
CONSULTANTS

Level 3, 3 Osterley Way, Manukau, Auckland. Phone: 09 222 2445

PROJECT TITLE:
HUGHES DEVELOPMENTS LIMITED
99 ESCOTTS ROAD
TUAKAU

SHEET TITLE:
WASTEWATER ASBUILT
STAGE 1 - DETAIL SHEET 1
SUB0311/18 & LUC0489/18

ISSUE STATUS:	ASBUILT
SCALE: (A1/A3)	1:250 / 1:500
SCALE BAR	0 5 10 15 20 25m
DRAWING NUMBER:	2011-01-AB411
REV:	A

Printed by: DAREN@27.06.19 // Filepath: S:\JOBS\2011 - HUGHES DEVELOPMENTS TUAKAU\CAD\ASBUIL\3\2011-01-AB410.DWG

1
DP 164972

ESCOTTS ROAD

WWMH E/5
LL 40.22
IL_{OUT} 38.76
IL_{IN} 38.80

WWMH E/6
LL 40.40
IL_{OUT} 39.08
IL_{IN} 39.12

DN150 WW 25.60m @1.1%

DN100 4.63m
(@ CH0.00)

4.26m
104.75)

1.61m
5.63)

3.71m
6.67)

3.70m
6.43)

WWMH D/4
LL 41.43
IL_{OUT} 39.22
IL_{IN} 39.30

DN100 7.22m
(@ CH0.00)

DN100 4.60m
(@ CH50.89)

DN150 WW 63.13m @1.2%

DN100 4.74m
(@ CH22.03)

WWMH G/1
LL 40.30
IL_{OUT} 38.66
IL_{IN} 38.71

DN100 7.05m
(@ CH0.00)

WWMH D/3
LL 40.03
IL_{OUT} 38.35
IL_{IN} 38.44
IL_{IN} 38.53

DN100 4.16m
(@ CH0.00)

DN100 4.28m
(@ CH89.87)

DN100 4.45m
(@ CH69.31)

DN100 4.42m
(@ CH52.45)

DN150 WW 105.56m @3.7%

DN150 WW 88.57m @2.0%

DN100 4.08m

DN100 3.90m
(@ CH73.16)

DN100 3.69m
(@ CH54.46)

DN100 4.08m

DN100 4.08m

DN100 4.08m

DN100 4.08m

DN100 4.08m

DN100 4.08m

DN100 4.08m

DN100 4.08m

DN100 4.08m

DN100 4.08m

DN100 4.08m

DN100 4.08m

DN100 4.08m



- LEGEND**
- EXISTING**
- (CR) PLOTTED FROM COUNCIL RECORDS
 - STORMWATER LINE AND MANHOLE
- ASBUILT**
- X.Xm STORMWATER LINE AND MANHOLE
 - STORMWATER CONNECTION
 - STAGE BOUNDARY

- NOTES**
1. LEVELS ARE IN TERMS OF AUCKLAND VERTICAL DATUM.
 2. COORDINATES ARE IN TERMS OF GD2000 MT EDEN CIRCUIT.
 3. ALL WASTEWATER LINES ARE DN150 uPVC SN16 TO AS/NZS1260.
 4. ALL WASTEWATER CONNECTIONS ARE DN100 uPVC SN16 TO AS/NZS1260.
 5. ALL INVERTS ARE MEASURED CLOCKWISE FROM THE OUTLET.
 6. MANHOLES ARE 1050mm UNLESS SHOWN OTHERWISE.
 7. SEE SHEET 2011-01-AB410 FOR CO-ORDINATE SCHEDULE.
 8. CONSTRUCTION WAS UNDERTAKEN IN 2018 AND 2019.

I, RYAN JAMES PITKETHLEY, BELIEVE ON REASONABLE GROUNDS THAT THE PIPE SIZES, FITTINGS POSITIONS, SCHEDULE OF CO-ORDINATES AND LID LEVELS, ARE CORRECT BASED ON THE INFORMATION SUPPLIED TO CIVILPLAN BY THE CONTRACTOR FOR THE WORK, TWOMEY CONSTRUCTION LTD.

RYAN JAMES PITKETHLEY
CMENGNZ CPENG 26.06.2019
DATE

A	ASBUILT ISSUED	26.06.19
REV	REVISION DETAILS	DATE

DRAWN:	DATE:
DKP	05.2019
CHECKED:	DATE:
MRR	26.06.19
APPROVED:	DATE:
RP	26.06.19

THIS DRAWING (AND DESIGN) REMAINS THE PROPERTY OF CIVILPLAN CONSULTANTS LIMITED AND MAY NOT BE REPRODUCED OR ALTERED WITHOUT PRIOR AGREEMENT FROM CIVILPLAN CONSULTANTS LIMITED. CIVILPLAN CONSULTANTS LIMITED WILL NOT ACCEPT LIABILITY ARISING FROM UNAUTHORISED USE OF THIS DRAWING.

CIVILPLAN CONSULTANTS

Level 3, 3 Osterley Way, Manukau, Auckland. Phone: 09 222 2445

PROJECT TITLE:
**HUGHES DEVELOPMENTS LIMITED
99 ESCOTTS ROAD
TUAKAU**

SHEET TITLE:
**WASTEWATER ASBUILT
STAGE 1 - DETAIL SHEET 2
SUB0311/18 & LUC0489/18**

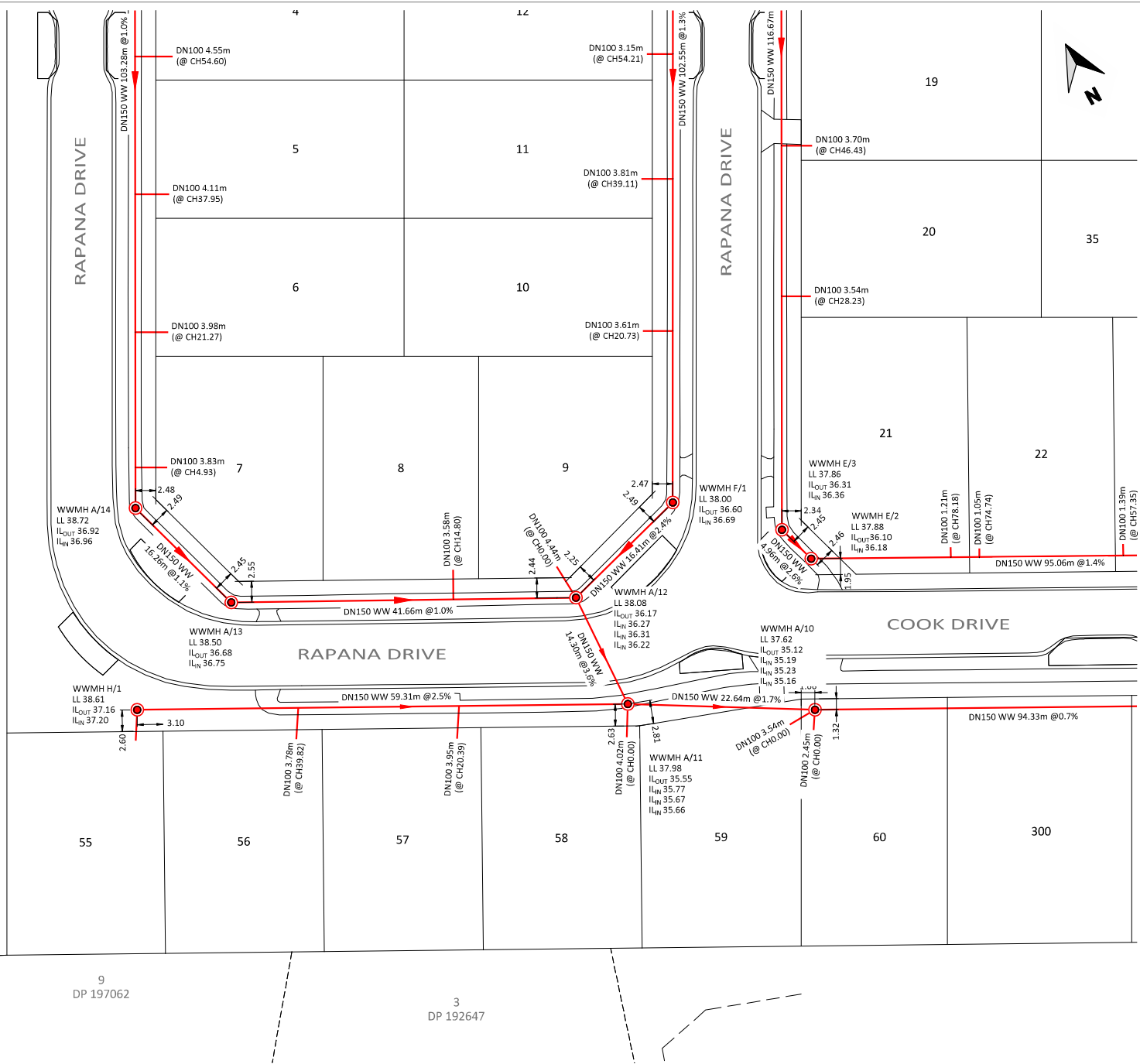
ISSUE STATUS: **ASBUILT**

SCALE: (A1/A3) **1:250 / 1:500**

SCALE BAR: 0 5 10 15 20 25m

DRAWING NUMBER: **2011-01-AB412** REV: **A**

PT ALLOT 14
PSH OF TUAKAU



LEGEND

EXISTING

- (CR) PLOTTED FROM COUNCIL RECORDS
- STORMWATER LINE AND MANHOLE

ASBUILT

- STORMWATER LINE AND MANHOLE
- X.Xm STORMWATER CONNECTION
- STAGE BOUNDARY

- NOTES**
- LEVELS ARE IN TERMS OF AUCKLAND VERTICAL DATUM.
 - COORDINATES ARE IN TERMS OF GD2000 MT EDEN CIRCUIT.
 - ALL WASTEWATER LINES ARE DN150 uPVC SN16 TO AS/NZS1260.
 - ALL WASTEWATER CONNECTIONS ARE DN100 uPVC SN16 TO AS/NZS1260.
 - ALL INVERTS ARE MEASURED CLOCKWISE FROM THE OUTLET.
 - MANHOLES ARE 1050mm UNLESS SHOWN OTHERWISE.
 - SEE SHEET 2011-01-AB410 FOR CO-ORDINATE SCHEDULE.
 - CONSTRUCTION WAS UNDERTAKEN IN 2018 AND 2019.

I, RYAN JAMES PITKETHLEY, BELIEVE ON REASONABLE GROUNDS THAT THE PIPE SIZES, FITTINGS POSITIONS, SCHEDULE OF CO-ORDINATES AND LID LEVELS, ARE CORRECT BASED ON THE INFORMATION SUPPLIED TO CIVILPLAN BY THE CONTRACTOR FOR THE WORK, TWOMEY CONSTRUCTION LTD.

Ryan James Pitkethley

RYAN JAMES PITKETHLEY
CMENGNZ CPENG 26.06.2019
DATE

Printed by: DAREN@27.06.19 // Filepath: S:\JOBS\2011 - HUGHES DEVELOPMENTS TUAKAU\CAD\ASBUILT\2011-01-AB410.DWG

NO.	REVISION	DATE
A	ASBUILT ISSUED	26.06.19
B	REVISION DETAILS	

DRAWN: DPK	DATE: 05.2019
CHECKED: MRR	DATE: 26.06.19
APPROVED: RIP	DATE: 26.06.19

THIS DRAWING (AND DESIGN) REMAINS THE PROPERTY OF CIVILPLAN CONSULTANTS LIMITED AND MAY NOT BE REPRODUCED OR ALTERED WITHOUT PRIOR AGREEMENT FROM CIVILPLAN CONSULTANTS LIMITED. CIVILPLAN CONSULTANTS LIMITED WILL NOT ACCEPT LIABILITY ARISING FROM UNAUTHORISED USE OF THIS DRAWING.

CIVILPLAN CONSULTANTS

Level 3, 3 Osterley Way, Manukau, Auckland. Phone: 09 222 2445

PROJECT TITLE:
**HUGHES DEVELOPMENTS LIMITED
99 ESCOTTS ROAD
TUAKAU**

SHEET TITLE:
**WASTEWATER ASBUILT
STAGE 1 - DETAIL SHEET 3
SUB0311/18 & LUC0489/18**

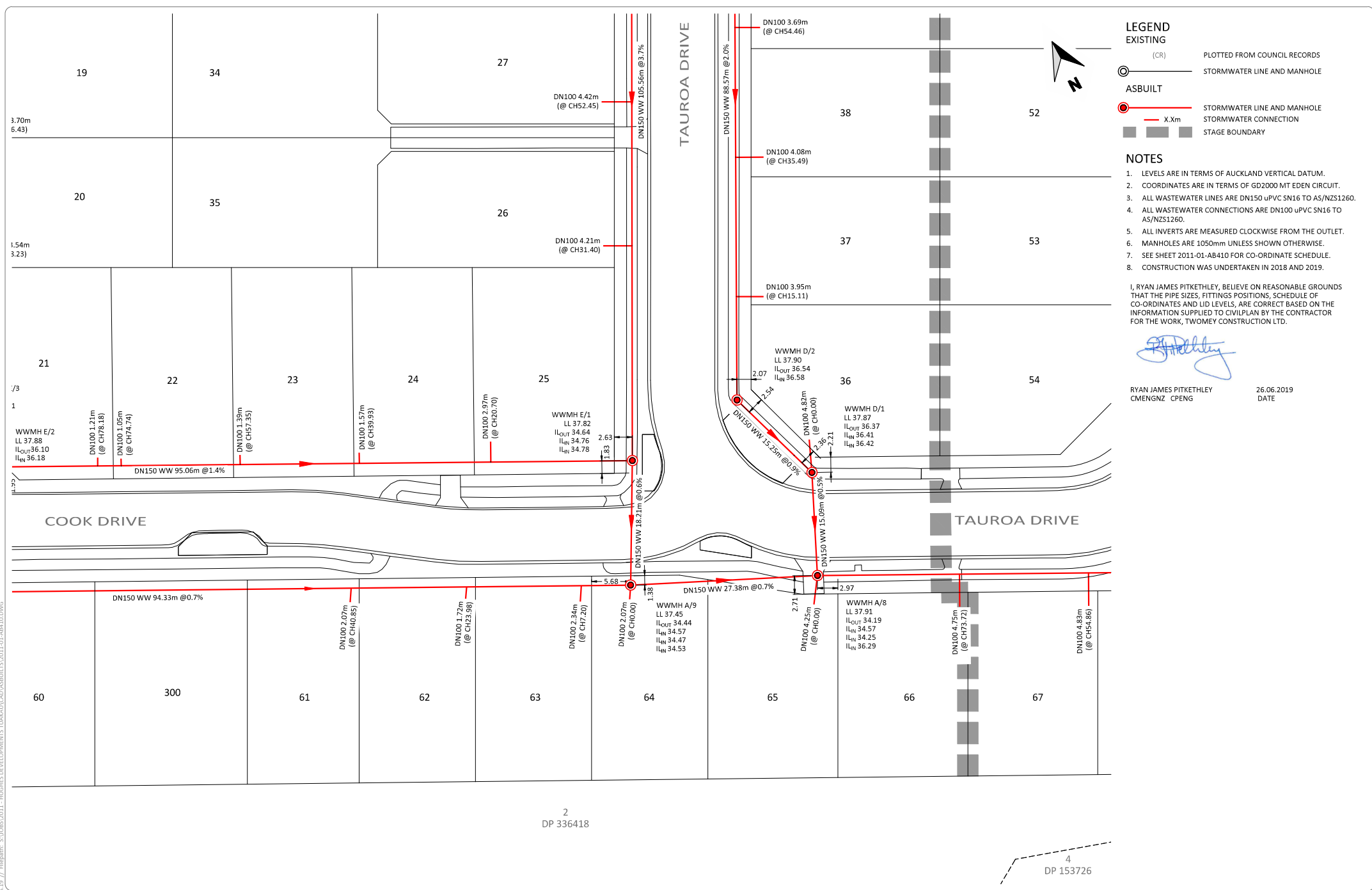
ISSUE STATUS: **ASBUILT**

SCALE: (A1/A3) **1:250 / 1:500**

SCALE BAR: 0 5 10 15 20 25m

DRAWING NUMBER: **2011-01-AB413** REV: **A**

Printed by: DAREN@27.06.19 // Filepath: S:\JOBS\2011 - HUGHES DEVELOPMENTS TUAKAU\CAD\ASBUIL\3\2011-01-AB410.DWG



LEGEND

EXISTING

- (CR) PLOTTED FROM COUNCIL RECORDS
- STORMWATER LINE AND MANHOLE

ASBUILT

- STORMWATER LINE AND MANHOLE
- X.Xm STORMWATER CONNECTION
- STAGE BOUNDARY

- NOTES**
- LEVELS ARE IN TERMS OF AUCKLAND VERTICAL DATUM.
 - COORDINATES ARE IN TERMS OF GD2000 MT EDEN CIRCUIT.
 - ALL WASTEWATER LINES ARE DN150 uPVC SN16 TO AS/NZS1260.
 - ALL WASTEWATER CONNECTIONS ARE DN100 uPVC SN16 TO AS/NZS1260.
 - ALL INVERTS ARE MEASURED CLOCKWISE FROM THE OUTLET.
 - MANHOLES ARE 1050mm UNLESS SHOWN OTHERWISE.
 - SEE SHEET 2011-01-AB410 FOR CO-ORDINATE SCHEDULE.
 - CONSTRUCTION WAS UNDERTAKEN IN 2018 AND 2019.

I, RYAN JAMES PITKETHLEY, BELIEVE ON REASONABLE GROUNDS THAT THE PIPE SIZES, FITTINGS POSITIONS, SCHEDULE OF CO-ORDINATES AND LID LEVELS, ARE CORRECT BASED ON THE INFORMATION SUPPLIED TO CIVILPLAN BY THE CONTRACTOR FOR THE WORK, TWOMEY CONSTRUCTION LTD.

R. Pitkethley

RYAN JAMES PITKETHLEY
CMENGNZ CPENG

26.06.2019
DATE

2
DP 336418

4
DP 153726

NO.	DESCRIPTION	DATE
A	ASBUILT ISSUED	26.06.19
REV	REVISION DETAILS	BY DATE

DRAWN:	DATE:
DKP	05.2019
CHECKED:	DATE:
MRR	26.06.19
APPROVED:	DATE:
RIP	26.06.19

THIS DRAWING (AND DESIGN) REMAINS THE PROPERTY OF CIVILPLAN CONSULTANTS LIMITED AND MAY NOT BE REPRODUCED OR ALTERED WITHOUT PRIOR AGREEMENT FROM CIVILPLAN CONSULTANTS LIMITED. CIVILPLAN CONSULTANTS LIMITED WILL NOT ACCEPT LIABILITY ARISING FROM UNAUTHORISED USE OF THIS DRAWING.

CIVILPLAN CONSULTANTS

Level 3, 3 Osterley Way, Manukau, Auckland. Phone: 09 222 2445

PROJECT TITLE:
**HUGHES DEVELOPMENTS LIMITED
99 ESCOTT'S ROAD
TUAKAU**

SHEET TITLE:
**WASTEWATER ASBUILT
STAGE 1 - DETAIL SHEET 4
SUB0311/18 & LUC0489/18**

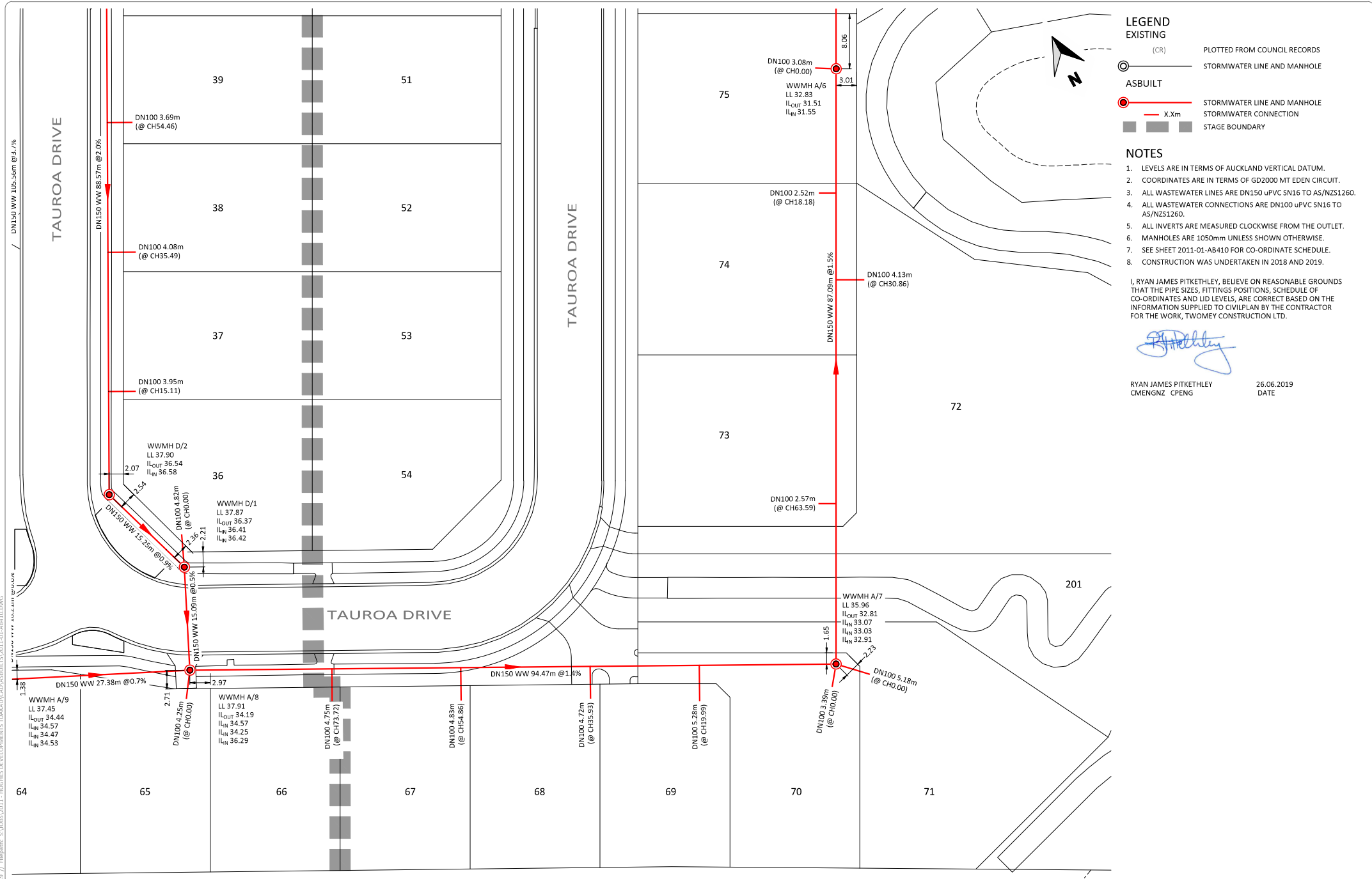
ISSUE STATUS: **ASBUILT**

SCALE: (A1/A3) **1:250 / 1:500**

SCALE BAR: 0 5 10 15 20 25m

DRAWING NUMBER: **2011-01-AB414** REV: **A**

Printed by: DAREN@27.06.19 // Filepath: S:\JOBS\2011 - HUGHES DEVELOPMENTS TUAKAU\CAD\ASBUILT\3\2011-01-AB410.DWG



LEGEND

EXISTING

- (CR) PLOTTED FROM COUNCIL RECORDS
- STORMWATER LINE AND MANHOLE

ASBUILT

- STORMWATER LINE AND MANHOLE
- X.Xm STORMWATER CONNECTION
- STAGE BOUNDARY

- NOTES**
- LEVELS ARE IN TERMS OF AUCKLAND VERTICAL DATUM.
 - COORDINATES ARE IN TERMS OF GD2000 MT EDEN CIRCUIT.
 - ALL WASTEWATER LINES ARE DN150 uPVC SN16 TO AS/NZS1260.
 - ALL WASTEWATER CONNECTIONS ARE DN100 uPVC SN16 TO AS/NZS1260.
 - ALL INVERTS ARE MEASURED CLOCKWISE FROM THE OUTLET.
 - MANHOLES ARE 1050mm UNLESS SHOWN OTHERWISE.
 - SEE SHEET 2011-01-AB410 FOR CO-ORDINATE SCHEDULE.
 - CONSTRUCTION WAS UNDERTAKEN IN 2018 AND 2019.

I, RYAN JAMES PITKETHLEY, BELIEVE ON REASONABLE GROUNDS THAT THE PIPE SIZES, FITTINGS POSITIONS, SCHEDULE OF CO-ORDINATES AND LID LEVELS, ARE CORRECT BASED ON THE INFORMATION SUPPLIED TO CIVILPLAN BY THE CONTRACTOR FOR THE WORK, TWOMEY CONSTRUCTION LTD.

R. Pitkethley

RYAN JAMES PITKETHLEY
CMENG NZ CPENG

26.06.2019
DATE

A	ASBUILT ISSUED	26.06.19
REV	REVISION DETAILS	DATE

DRAWN:	DATE:
DKP	05.2019
CHECKED:	DATE:
MRR	26.06.19
APPROVED:	DATE:
RP	26.06.19

THIS DRAWING (AND DESIGN) REMAINS THE PROPERTY OF CIVILPLAN CONSULTANTS LIMITED AND MAY NOT BE REPRODUCED OR ALTERED WITHOUT PRIOR AGREEMENT FROM CIVILPLAN CONSULTANTS LIMITED. CIVILPLAN CONSULTANTS LIMITED WILL NOT ACCEPT LIABILITY ARISING FROM UNAUTHORISED USE OF THIS DRAWING.

CIVILPLAN CONSULTANTS

Level 3, 3 Osterley Way, Manukau, Auckland. Phone: 09 222 2445

PROJECT TITLE:
**HUGHES DEVELOPMENTS LIMITED
99 ESCOTTAS ROAD
TUAKAU**

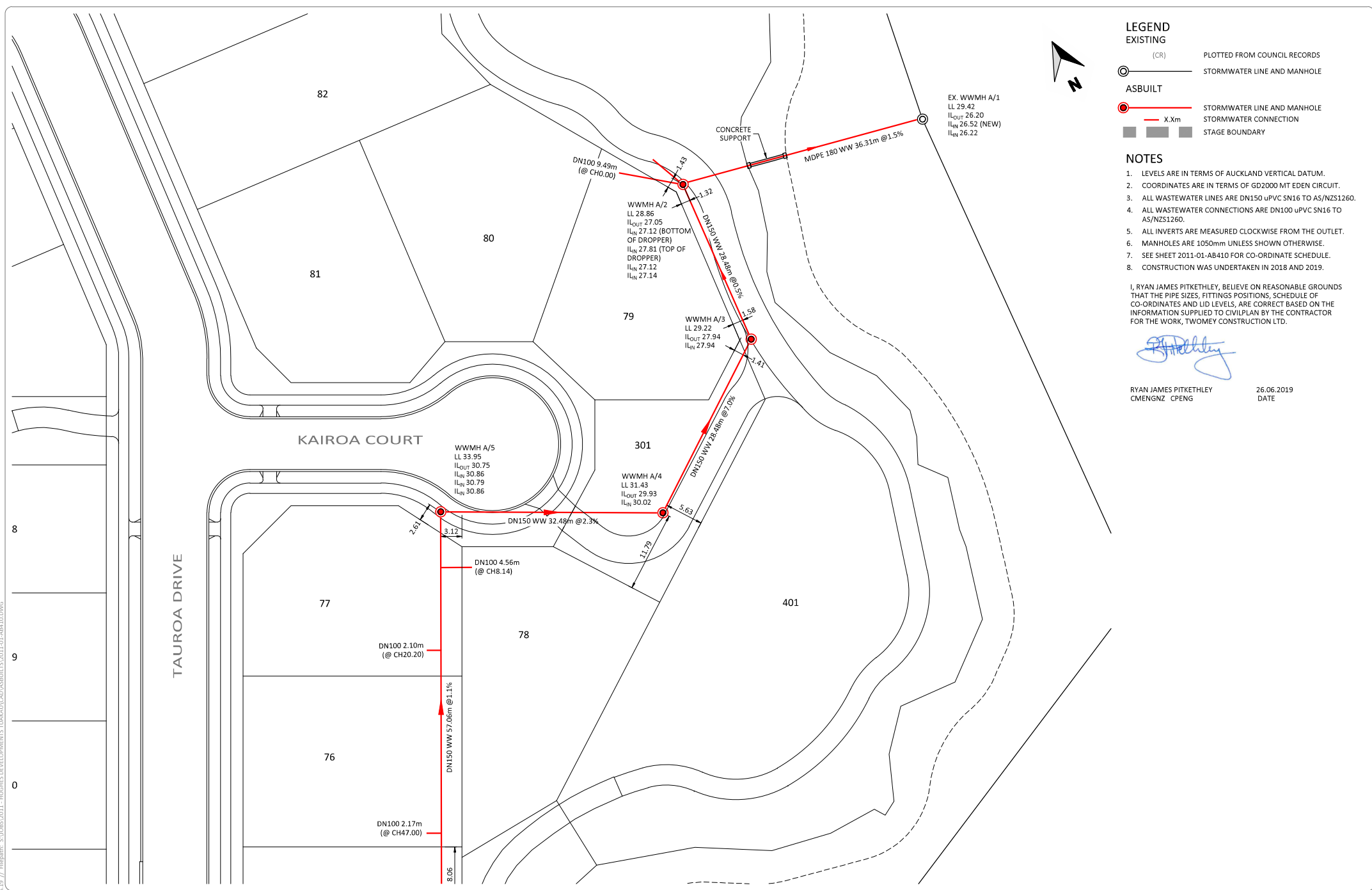
SHEET TITLE:
**WASTEWATER ASBUILT
STAGE 1 - DETAIL SHEET 5
SUB0311/18 & LUC0489/18**

ISSUE STATUS: **ASBUILT**

SCALE: (A1/A3) **1:250 / 1:500**

SCALE BAR: 0 5 10 15 20 25m

DRAWING NUMBER: **2011-01-AB415** REV: **A**



LEGEND

EXISTING

- (CR) PLOTTED FROM COUNCIL RECORDS
- STORMWATER LINE AND MANHOLE

ASBUILT

- STORMWATER LINE AND MANHOLE
- X.Xm STORMWATER CONNECTION
- STAGE BOUNDARY

- NOTES**
- LEVELS ARE IN TERMS OF AUCKLAND VERTICAL DATUM.
 - COORDINATES ARE IN TERMS OF GD2000 MT EDEN CIRCUIT.
 - ALL WASTEWATER LINES ARE DN150 uPVC SN16 TO AS/NZS1260.
 - ALL WASTEWATER CONNECTIONS ARE DN100 uPVC SN16 TO AS/NZS1260.
 - ALL INVERTS ARE MEASURED CLOCKWISE FROM THE OUTLET.
 - MANHOLES ARE 1050mm UNLESS SHOWN OTHERWISE.
 - SEE SHEET 2011-01-AB410 FOR CO-ORDINATE SCHEDULE.
 - CONSTRUCTION WAS UNDERTAKEN IN 2018 AND 2019.

I, RYAN JAMES PITKETHLEY, BELIEVE ON REASONABLE GROUNDS THAT THE PIPE SIZES, FITTINGS POSITIONS, SCHEDULE OF CO-ORDINATES AND LID LEVELS, ARE CORRECT BASED ON THE INFORMATION SUPPLIED TO CIVILPLAN BY THE CONTRACTOR FOR THE WORK, TWOMEY CONSTRUCTION LTD.

RYAN JAMES PITKETHLEY
CMENGNZ CPENG
26.06.2019
DATE

Printed by: DAREN@27.06.19 // Filepath: S:\JOBS\2011 - HUGHES DEVELOPMENTS TUAKAU\CAD\ASBUILT\2011-01-AB410.DWG

A	ASBUILT ISSUED	RP	26.06.19
REV	REVISION DETAILS	BY	DATE

DRAWN:	DATE:	DKP	05.2019
CHECKED:	DATE:	MRR	26.06.19
APPROVED:	DATE:	RP	26.06.19

THIS DRAWING (AND DESIGN) REMAINS THE PROPERTY OF CIVILPLAN CONSULTANTS LIMITED AND MAY NOT BE REPRODUCED OR ALTERED WITHOUT PRIOR AGREEMENT FROM CIVILPLAN CONSULTANTS LIMITED. CIVILPLAN CONSULTANTS LIMITED WILL NOT ACCEPT LIABILITY ARISING FROM UNAUTHORISED USE OF THIS DRAWING.

CIVILPLAN CONSULTANTS

Level 3, 3 Osterley Way, Manukau, Auckland. Phone: 09 222 2445

PROJECT TITLE:
**HUGHES DEVELOPMENTS LIMITED
99 ESCOTTS ROAD
TUAKAU**

SHEET TITLE:
**WASTEWATER ASBUILT
STAGE 1 - DETAIL SHEET 6
SUB0311/18 & LUC0489/18**

ISSUE STATUS: **ASBUILT**

SCALE: (A1/A3) **1:250 / 1:500**

SCALE BAR: 0 5 10 15 20 25m

DRAWING NUMBER: **2011-01-AB416** REV: **A**